



The “Print and Cut” function immediately turns an idea into a real product

The multiple functions of the CJV300 models enable high-quality printing and high-accuracy cutting. The CJV300 alone completes the production of labels, stickers, and vehicle wrapping films.

The continuous-register mark-detection function enables continuous media cutting.

The CJV300 automatically detects all register marks set by the RasterLink6 on the media, and cuts contour lines precisely by utilizing simultaneous automatic calibration.



Print and cut on no-register mark media / Cut and print function

Media up to 1m in length do not require register marks. This function reduces the medium requirements.

Outstanding speed

The CJV300 models provide high productivity and high image quality.



RasterLink6

The newly developed software RIP with user-friendly operation and high functionality

It would mean nothing to provide high-performance software with a variety of useful functions if the software itself is too difficult and complicated to use... The newly developed RasterLink software was designed to be extremely user-friendly with this idea in mind. With a wide variety of newly added features, RIP software, software for people of all ages and backgrounds, now encompasses a perfect package with all of the features needed to reproduce beautiful full-color finishes in high definition with the easiest set of controls to use to navigate with!!

Specifications

Item	CJV300-130	CJV300-160
Printhead	On-demand piezo head (2 staggered printheads)	
Print resolution	360 dpi, 540 dpi, 720 dpi, 1440 dpi	
Maximum print width	1,361 mm (53.5 in)	1,610 mm (63.3 in)
Maximum media width	1,371 mm (53.9 in)	1,620 mm (63.7 in)
Ink	Type/Color	Eco-solvent ink SS21 (C, M, Y, K, Lc, Lm, Lk, Or, W, Si) BS3 (C, M, Y, K) only available in emerging countries Water-based sublimation ink Sb53 (Bi, M, Y, K, DK, Lb, Lm)
	Package size	SS21: 440 ml Ink cartridge/2 L Ink pack (White and silver are provided in 220 ml Ink cartridge only.) BS3: 600 ml Ink pack/2 L Ink pack Sb53: 440 ml Ink cartridge/2 L Ink pack * Optional MBIS3 (Mimaki Bulk Ink System3) is required for using 2 L Ink pack.
Media thickness	MCT (Mimaki Circulation Technology) (Only applies to white and silver inks)	
	1.0 mm or less	
Rolled media weight	40 kg (88lb) or less	
Certifications	VCCI class A / FCC class A / ETL (UL 60950-1) CE Marking (EMC, Low voltage, and Machinery directive) / CB RoHS / REACH and Energy Star / RCM	
Interface	USB 2.0, LAN for E-mail notification function	
Power supply	Single-phase (AC100-120V / AC200-240V) x 2	
Power consumption	100V: 2.88kW (1.44kW x 2), 200V: 3.84kW (1.92kW x 2)	
Operational environment	Temperature: 20-30°C (68-86°F), Humidity: 35-65% Rh (Non condensing)	
Dimensions (W x D x H)	2,525 mm x 700 mm x 1,392 mm (99 in x 28 in x 55 in)	2,775 mm x 700 mm x 1,392 mm (109 in x 28 in x 55 in)
Weight	167 kg	178 kg

Supplies

Item	Color	Item No.	Remarks
SS21	Cyan	SPC-0501C	440 ml Ink cartridge
	Magenta	SPC-0501M	
	Yellow	SPC-0501Y	
	Black	SPC-0501K	
	Light Cyan	SPC-0501LC	
	Light Magenta	SPC-0501LM	220 ml Ink cartridge
	Orange	SPC-0501Or	
	Light Black	SPC-0501Lk	
	White	SPC-0504W-2	
	Silver	SPC-0504Si	
BS3	Cyan	SPC-0588C	2,000 ml Ink pack
	Magenta	SPC-0588M	
	Yellow	SPC-0588Y	
	Black	SPC-0588K	
	Light Cyan	SPC-0588LC	
	Light Magenta	SPC-0588LM	600 ml Ink pack
	Orange	SPC-0588Or	
	Light Black	SPC-0588Lk	
	Cyan	SPC-0667C	
	Magenta	SPC-0667M	
Sb53	Yellow	SPC-0667Y	2,000 ml Ink pack
	Black	SPC-0667K	
	Cyan	SPC-0693C	
	Magenta	SPC-0693M	
	Yellow	SPC-0693Y	
	Black	SPC-0693K	440 ml Ink cartridge
	Blue	SB53-BL-44	
	Magenta	SB53-M-44	
	Yellow	SB53-Y-44	
	Black	SB53-K-44	
Sb53	Deep Black	SB53-DK-44	2,000 ml Ink pack
	Light Blue	SB53-LBL-44	
	Light Magenta	SB53-LM-44	
	Blue	SB53-BL-2L	
	Magenta	SB53-M-2L	
	Yellow	SB53-Y-2L	440 ml Ink cartridge
	Black	SB53-K-2L	
	Deep Black	SB53-DK-2L	
	Light Blue	SB53-LBL-2L	
	Light Magenta	SB53-LM-2L	

Alguns dos exemplos deste catálogo são renderizados; Especificações, desenho e dimensões estabelecidas neste catálogo podem sofrer alterações sem aviso prévio; O nome das empresas e mercadorias usadas neste catálogo possuem registro de marca nas respectivas empresas; As impressoras a jato de tinta usam finos pontos de impressão, portanto, podem ocorrer variações de cores após a troca da cabeça de impressão. Além disso, note que se for usado várias unidades, as cores podem variar de intensidade de uma unidade para a outra. Para melhor qualidade de impressão e resultados, é necessária manutenção periódica dos equipamentos; É de responsabilidade dos clientes a ciência das leis aplicáveis ao produto e qualquer infringimento das mesmas; A Mimaki orienta a realização de testes de impressão antecipadamente à compra do equipamento.

MIMAKI ENGINEERING CO., LTD.
2182-3 Shigeno-otsu, Tomi-city, Nagano 389-0512, Japan
Tel: +81-268-78-2288
trading@mimaki.jp www.mimaki.co.jp

MIMAKI USA, INC.
150 Satellite Boulevard, suite A, Suwanee, Georgia 30024, U.S.A
Atlanta +1-888-530-3988 Boston +1-888-530-3986
Los Angeles +1-888-530-3987 Chicago +1-888-530-3985
www.mimakiusa.com

MIMAKI BRASIL COM. IMP Ltda
Av. Dr. Luis Rocha Miranda, 177 - Jabaquara - SP - CEP: 04344-010
Tel: 55 11 3207-0022 | Fax 55 11 3207-3066
vendas@mimakibrasil.com.br
www.mimakibrasil.com.br



Print 'n' cut

IMAGINATION TO CREATION



Silver ink inspires imagination

Newly developed SS21 silver ink is available. Being 1.67* times brighter than conventional silver inks, SS21 ink adds brilliant and beautiful mirror effects to print results.

* Obtained from comparison measurements of SS21 and ES3 silver inks conducted at the Mimaki HQ.



Silver color added to catch copies and logos strikes a profound impression on the viewers, which makes silver printing very appealing.



The intensity of brightness in the silver ink varies as per the viewing angle. Such a high level of brightness attracts the viewer.

Diverse print expressions stimulate your creativity

Achieves a higher level of expression by using orange ink

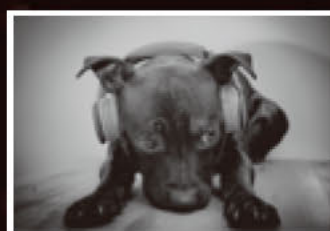
By using the orange ink as a process color, 94.8% of the PANTONE color chart is covered with approximate colors. Thanks to a wider gamut with the orange ink, food freshness can be simulated, and corporate colors can be faithfully represented.



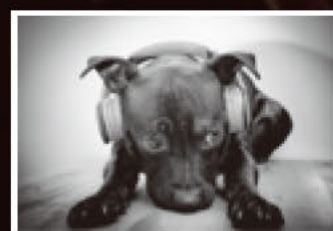
Conventional ink-set



Ink-set including the orange ink



Conventional ink-set



Ink-set including the light black ink

Accurate expression with light black ink

The light black ink improves the printed grayscale gradation. It also faithfully represents monochrome data without introducing unexpected color shifts. Light black ink ensures a more accurate color representation.

Alluring print quality that invigorates your creative abilities

Banding reduction

The reputable anti-banding function MAPS2 has been improved to MAPS3*. Advanced MAPS3 scatters ink droplets and overlaps prints on areas of frequent banding.

* MAPS3: Mimaki Advanced Pass System 3



Advanced ink jet technology ensures high-quality printing at all times

Mimaki's unique advanced ink jet technology allows the print head to jet each ink droplet at the appropriate jetting angle while retaining excellent ink droplet circularity. This advanced technology ensures that texts, lines, and edges are clearly printed.



Printing without waveform management

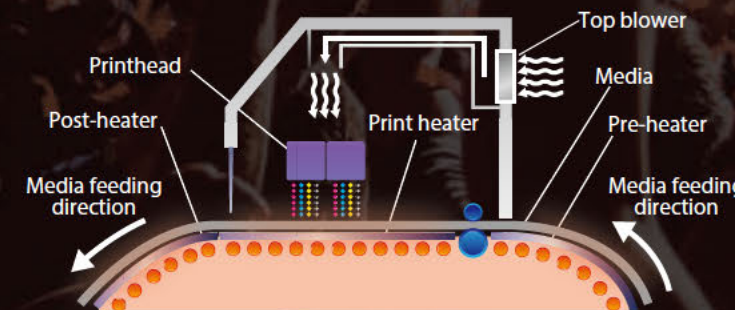


Printing with optimized waveform

3-Way intelligent heater

A 3-way intelligent heater fixes droplets placed on media. By using Mimaki's original technology in heating the media at a controlled temperature, ink can be fixed while maintaining high color development and high image quality. Thus the CJV300 provides both steady color development and easy handling after printing.

- Pre-heater: Heats media to the optimum temperature before printing.
- Print heater: Dries ink after it lands on media before it bleeds, improving color development.
- Post-heater: Enhances ink drying and achieves stable take-up.
- Top blower: Air blower supports drying of ink.



3-way Intelligent Heater patent No.
Japan: 4889059 USA: 8.444.262 China: ZL 200910222559.8

Smooth gradation printing

By ejecting 3 different dot sizes (Large/Medium/Small), images are expressed smoothly without graininess, even in large-format printing. Furthermore, the Large dot size is 35pl and by using this size effectively, light and shade can be expressed firmly while using higher printing speed settings.

Simple and practical for everyday use

Continuous operation support pack to minimize downtime

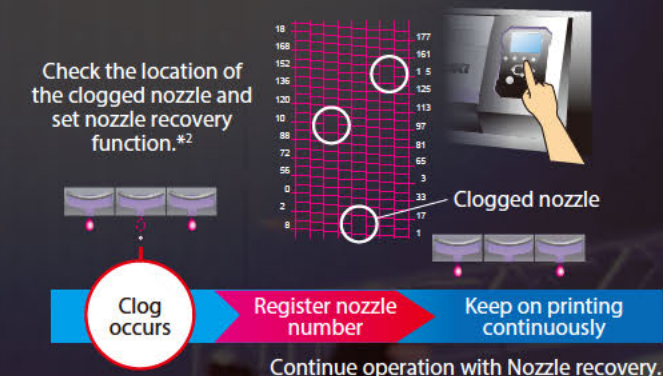
The CJV300 is prepared with the following continuous operation support pack to minimize downtime in case of emergency such as machine failure.

Productivity maintenance - NRS*1

The NRS substitutes defective nozzles with non-defective nozzles until the technician arrives. This feature enables uninterrupted print operations and continuous productivity.

*1 NRS: Nozzle Recovery System

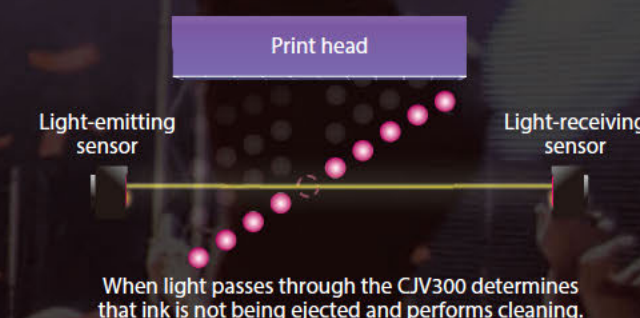
*2 10 nozzles per nozzle row can be registered.



Prevention of print quality problems - NCU*

The CJV300 is equipped with Mimaki's original automatic NCU. Clogged nozzles are automatically detected and cleaned by the NCU. If the clogging is not resolved by cleaning, the CJV300 automatically sets the nozzle recovery function NRS and resumes printing. These functions significantly reduce the waste printing caused by clogged nozzles during a continuous printing run.

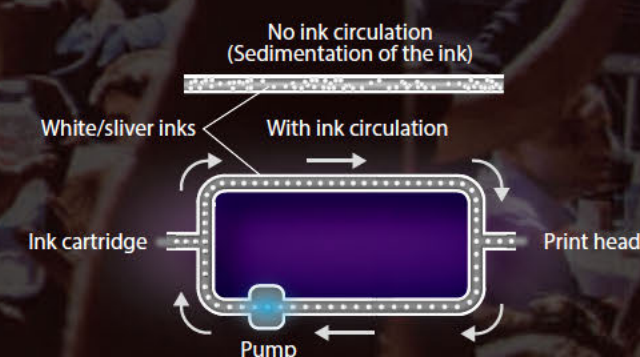
* NCU: Nozzle Check Unit



Stable printing using the ink circulation system - MCT*

MCT is a standard feature included to effectively avoid the settling of white and silver pigments in the ink lines by regularly circulating the ink. It prevents print troubles and enables stable output from the start of operation. In addition, MCT contributes to reduction of ink waste, thereby supporting environmentally and economically friendly applications.

* MCT is only available for white and silver inks.
(MCT = Mimaki Circulation Technology)



Reliable ink supply system

UISS*

The CJV300 is equipped with a 2-ink cartridge per color. Even if one cartridge becomes empty, ink supply continues from the other cartridge, preventing print suspension from ink end.

Non-stop ink replacement

Cartridges that are out of ink can be replaced while printing. This prevents print suspension from ink end.

MBIS III (Option)

Optional MBIS III with its large 2L ink pack enables continuous printing at a reduced operational cost.

* UISS is compatible only with the CMYK ink set.