

MDL Gateway Operation Manual

Thank you very much for purchasing the MDL Gateway. In order to use the product safely and correctly, please read the instruction manual carefully and understand it thoroughly before use.



- Input/output cables are not included. Prepare the cable according to the customer's equipment specifications. The input/output connector (37-pin D-sub connector) uses a clamping screw (Hirosugi DSB-7048DE clamp section: M2.6).
- Before using the MDL Gateway, be sure to read the instruction manual for the main unit.



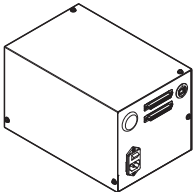
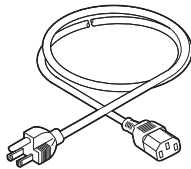

- What is "MDL commands"?
 "MDL commands" are commands for enabling control of Mimaki's printers using the user's production system and peripheral devices.
 They make it possible to control the position and height of work setting tables and control printer operations such as starting printing.
 It is also possible to acquire the printer remaining ink quantity, error information, etc.
 Concerning "MDL commands", through utilizing technical information (SDK) provided by Mimaki to develop software, it becomes possible to build the optimum system for the customer.
- Information necessary for running "MDL commands, MDL Gateway" is distributed on the following dedicated site as technical information (SDK).

<https://mimaki.com/download/sdk/>

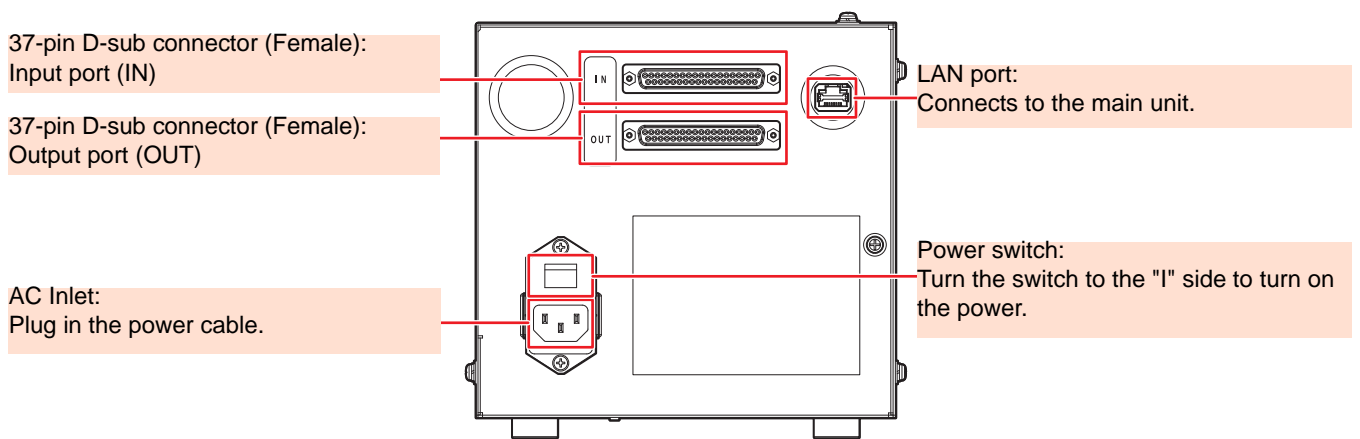
User registration (free of charge) is required to download SDK.

Accessories

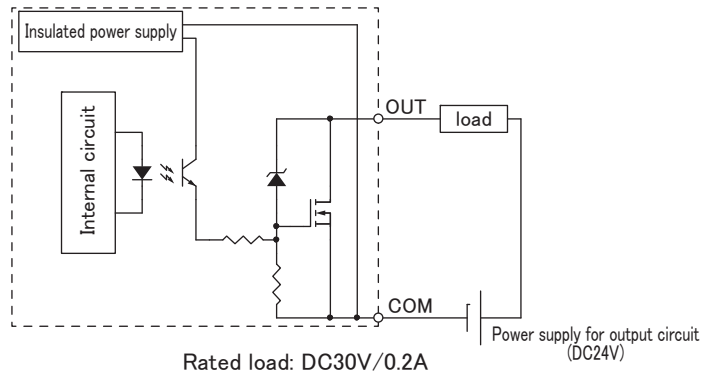
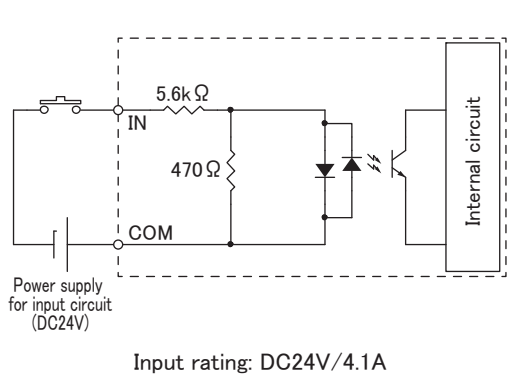
If there is a shortage of parts or a problem, please contact your local distributor or MIMAKI sales office.

<p>MDL Gateway x1</p> 	<p>Power cables x5 * Use a compatible power cable.</p> 	<p>LAN cable x1</p> 
--	---	--

Name and function of each parts



IO pin Internal circuit diagram



Input/output specifications for 37-pin D-sub connector

Model Number: DCSP-JB37SF, Manufacturer: JAE

Pin No.	Signal name (IN)	Signal name (OUT)	Pin No.	Signal name (IN)	Signal name (OUT)
1	Reserve	Printer ready for operation	20	Reserve	Reserve
2	Reserve	printer linkage enabled state	21	Reserve	Reserve
3	Automatic operation	Acceptable for secondary work	22	Reserve	Reserve
4	Reserve	ready-to-print state	23	Reserve	Reserve
5	Start printing / request	During printing	24	Reserve	Reserve
6	Pause / Request	Error occurring	25	Reserve	Reserve
7	Initialization / request	Y-bar origin / Table origin	26	Reserve	Reserve
8	Cleaning / Request	During Cleaning	27	Reserve	Reserve
9	Table action/request	Reservation	28	Reserve	Reserve
10	Reserve	Workpiece sensor status	29	Reserve	Reserve
11	Reserve	Low ink level information	30	Reserve	Reserve
12	Reserve	Warning occurring	31	Reserve	Reserve
13	Data clear / request	Table in operation	32	Reserve	Reserve
14	Table vacuum switching / request	Table position	33	Reserve	Reserve
15	Reserve	Reserve	34	Reserve	Reserve
16	Reserve	Reserve	35	Reserve	Reserve
17	(+)COM	(-)COM	36	(+)COM	(-)COM
18	N.C	N.C	37	N.C	N.C
19	N.C	N.C			

* Signal names may be changed, added, or deleted.

Specifications

Power supply specifications		AC100 to 240V $\pm 10\%$ 50/60 Hz 1A max
Installation environment	Permissible ambient temperature	15 to 30 °C
	Relative humidity	35 to 65 %RH (no condensation)
	Temperature gradient	Not more than ± 10 °C/h
	Dust	Typical office
	Maximum operating altitude	2,000 m
Weight		3.2 kg
External dimensions		282 x 183 x 173 mm