

PICT for MPC equipped machines

Setup Guide

Table of Contents

Precautions.....	3
Introduction to this Manual.....	4
Notation Used in this Document	4
Symbols	4

Chapter 1 Mimaki Cloud Technology PICT

1.1 System Configuration	6
1.2 System Requirements	8
1.3 Network Connection Procedure.....	9

Chapter 2 PICT Setup

2.1 Setup Procedure.....	12
2.2 Launching PICT Up for the First Time	13
Procedure for Launching for the First Time	13
Cloud Setup Procedure	17
Printer Registration Checking	19
2.3 Updating PICT Up.....	21
Update Timing	21

Chapter 3 Troubleshooting

3.1 Troubleshooting	24
I've forgotten my password.....	24
I want to check the data upload settings.....	24
No virtual keyboard buttons are displayed.....	24

Precautions

- Any unauthorized use or reproduction, in part or whole, of this manual is strictly prohibited.
- The information in this manual may be subject to change without notice in the future.
- Note that some of the descriptions in this manual may differ from the actual specifications due to improvements and revisions to this software.
- Copying Mimaki Engineering Co. Ltd. software described in this manual to other disks (except for the purpose of backup) or loading it to memory other than for the purpose of running it, is strictly prohibited.
- With the exception of what is provided in the warranty provisions, Mimaki Engineering Co. Ltd. does not assume any liability for any damage (including, but not limited to, the loss of profit, indirect damage, special damage, or other monetary damages) resulting from the use or inability to use this product. The same shall also apply to cases where Mimaki Engineering Co. Ltd. has been advised of the possibility of damage in advance. For example, we shall not be liable for any loss of media (work) caused by use of this product or indirect losses caused by products created using the media.
- The customer is responsible for any Internet connection charges incurred.

Microsoft, Windows, and Windows 10, Windows 11 are registered trademarks or trademarks of Microsoft Corporation in the United States and other countries.

Other company names and product names described in this manual are trademarks or registered trademarks of their respective companies.

Introduction to this Manual





This document describes Mimaki Cloud Technology PICT for machines with Mimaki Printer Controller installed, and describes the setup procedure for uploading data from PICT Up inside the printer to the cloud.

Notation Used in this Document

- The buttons and items displayed in screens are enclosed in square brackets ([]), such as [OK] or [Open].
- The names of the software provided by us may be abbreviated as follows.

Official name	Abbreviation
Mimaki Cloud Technology PICT	PICT
Mimaki Printer Controller	MPC

Symbols

Description		
	Important	The "Important" symbol indicates information which you must know before using this tool.
	Compulsory	The "Compulsory" symbol indicates items that must be performed.
	Tip	The "Tip" symbol indicates useful information to know.
	Reference information	This indicates a reference page for related information. Clicking the symbol takes you to the applicable page.

Chapter 1 Mimaki Cloud Technology PICT



This chapter

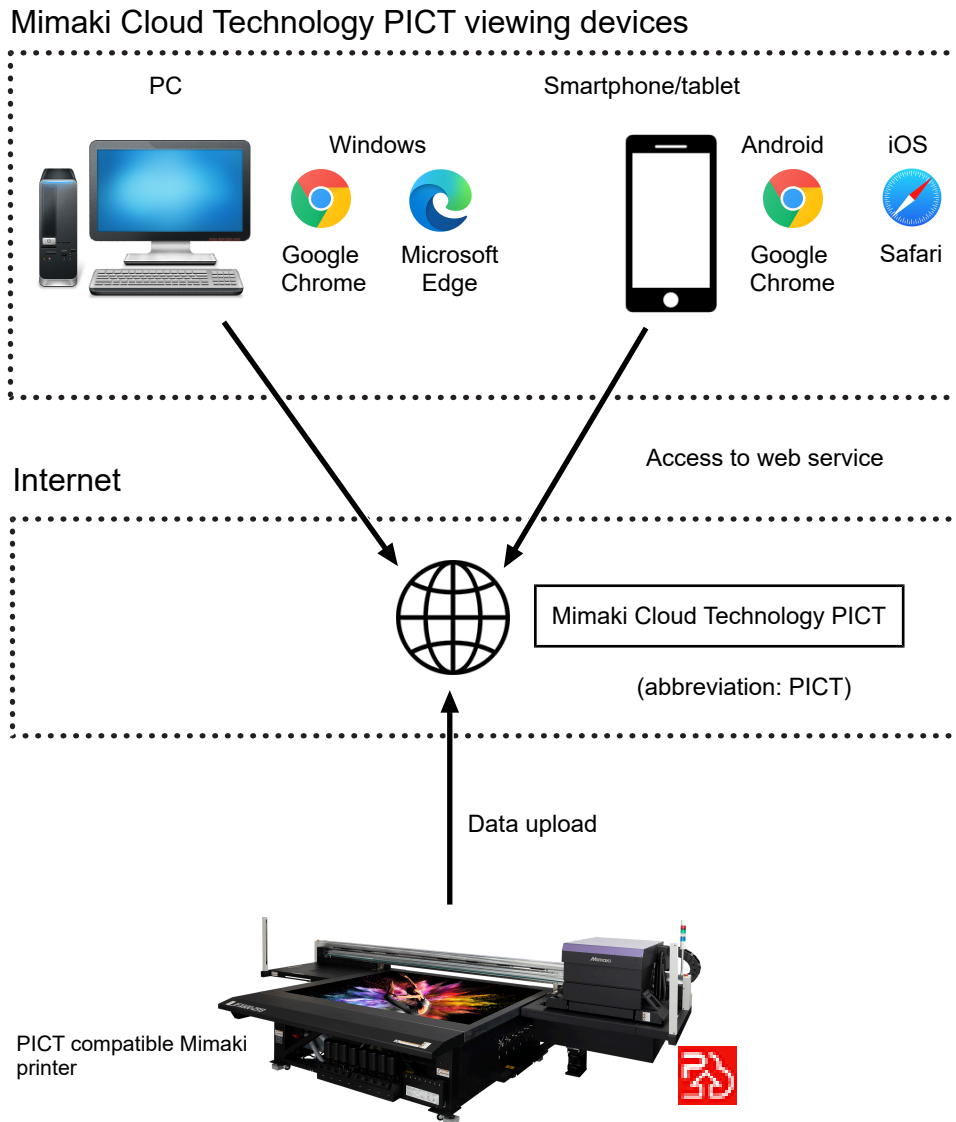
This section outlines Mimaki Cloud Technology PICT.

System Configuration	6	Network Connection Procedure	9
System Requirements	8		

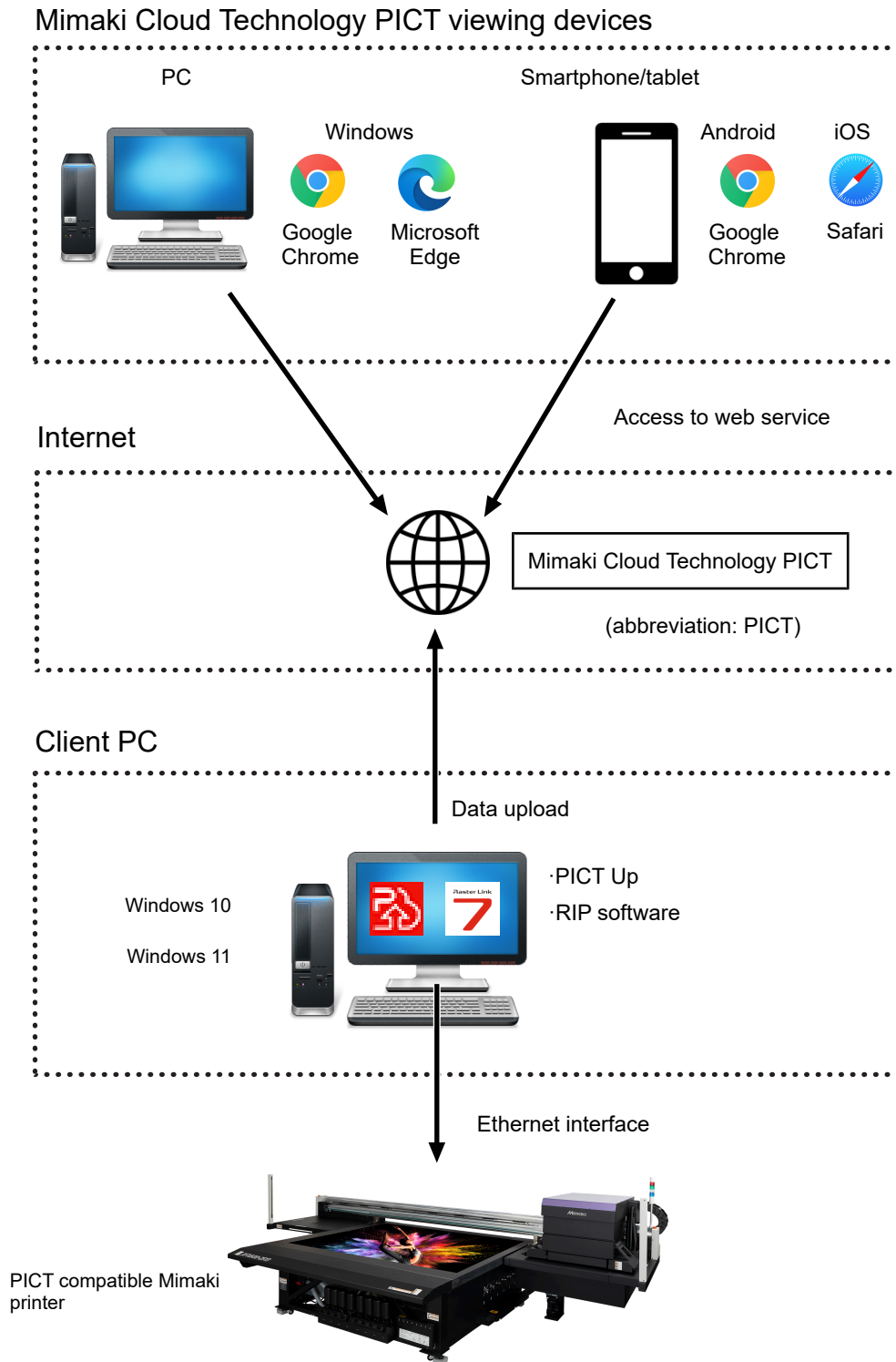
1.1 System Configuration

The system configuration for Mimaki Cloud Technology PICT is as follows:

- Uploading data from PICT Up inside the printer



● Uploading data from a client PC



1.2 System Requirements

● Mimaki Cloud Technology PICT (abbreviation: PICT)

Compatible browsers

PICT can be viewed in the following browsers:

Environment	Description
Compatible browsers	Google Chrome Microsoft Edge Safari (excluding Windows version)
Display language	Japanese, English, Simplified Chinese, German, French, Italian

● PICT Up

Client PC

The following operating environment is required for the PC to install PICT Up:

Environment	Description
Windows PC	Windows 10 Home/Pro/Enterprise (64 bit) Windows 11 Home/Pro/Enterprise (64 bit)
Operating system languages	Japanese, English, Italian, Spanish, German, Portuguese, Chinese (simplified/traditional), Korean, French, Thai, Indonesian, Russian, Turkish, Czech, Polish
Display language	Japanese, English
Interface	Ethernet
Storage	At least 3 GB of free disk space on C drive

Printer control PC

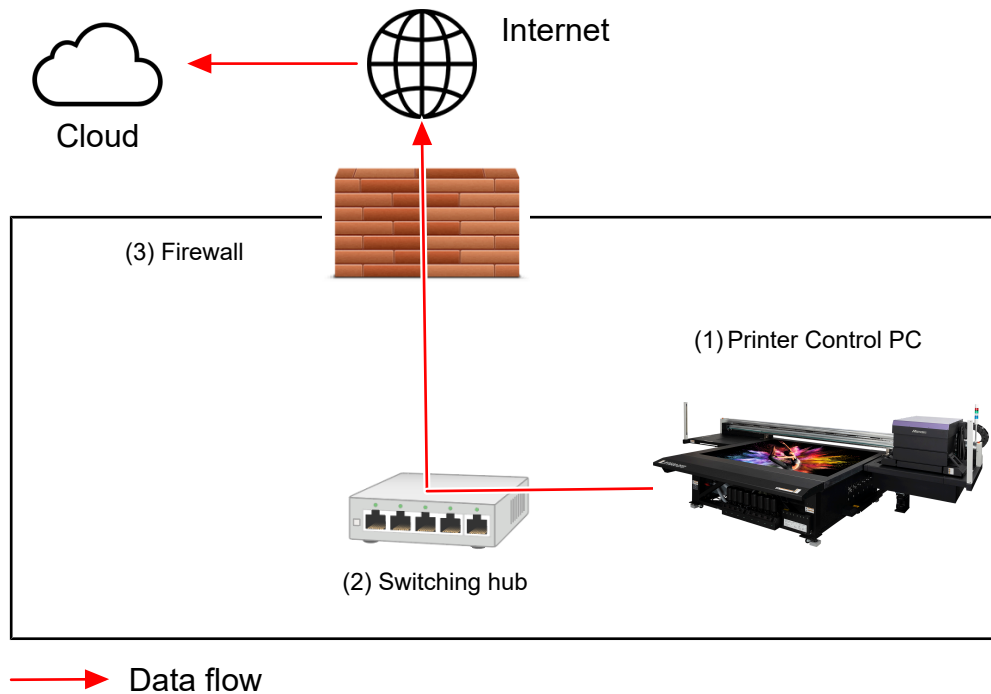
Check the product information on the Mimaki website to determine whether or not your printer is compatible with PICT.

<https://mimaki.com/product/>

1.3 Network Connection Procedure

There are two ways of connecting to upload printer information to the cloud, as follows:

- **Sending data to the cloud from PICT Up within the printer**



(1) Printer Control PC

- Connect a LAN cable to the LAN port on the Printer Control PC.

(2) Switching hub

- Connect the LAN cable connected to the Printer Control PC to the switching hub.
- Connect the switching hub to a local network connected to the Internet.



- For information on the printer network connection, network settings, and recommended conditions, refer to the printer manual.

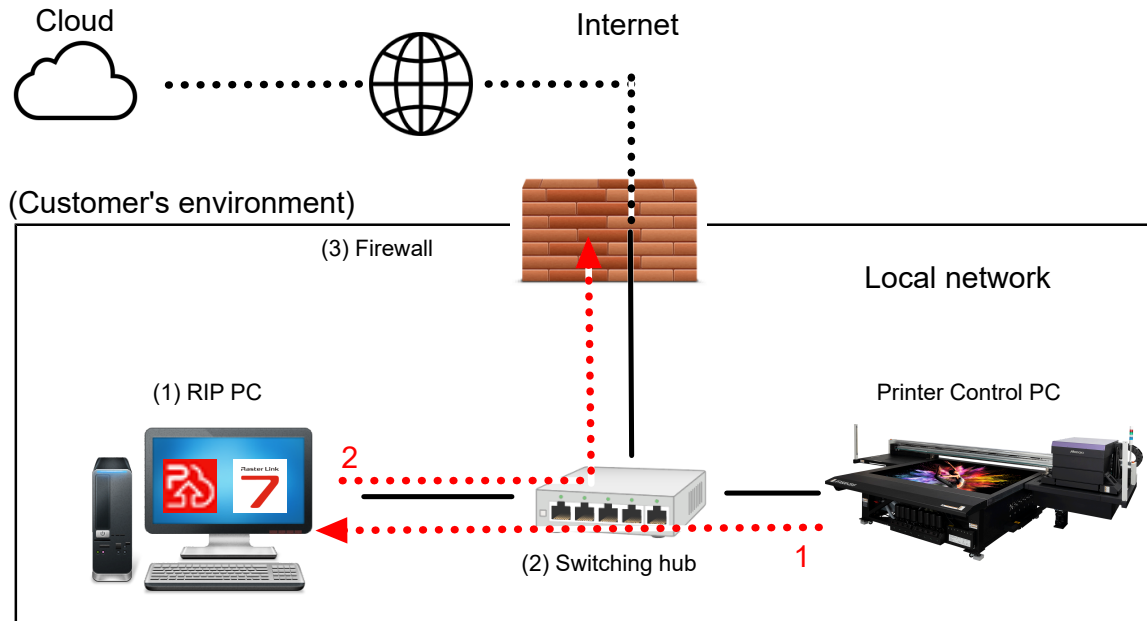
(3) Firewall

- Check to confirm that connection to the Internet is possible. For further details, contact your network administrator.
- Use a standard website access port for the interface port used with the cloud. (TCP443 port)

● Sending data to the cloud from a RIP PC

Important!

- For information on the connection method for sending data to the cloud from a RIP PC, refer to "Mimaki Cloud Technology PICT Online Help".



-▶ Printer data and log data flows
- 1 2 Data flow order
- LAN connection

Chapter 2 PICT Setup



This chapter

This section describes the procedure for using PICT for the first time.

Setup Procedure	12	Cloud Setup Procedure.....	17
Launching PICT Up for the First Time.....	13	Printer Registration Checking	19
Procedure for Launching for the First Time	13	Updating PICT Up	21
		Update Timing.....	21

2.1 Setup Procedure



- Using PICT requires an Internet connection.



- For information on installing PICT Up on the RIP PC to upload data, refer to "PICT Setup" in "Mimaki Cloud Technology PICT Online Help".



- Complete PICT user registration beforehand, and check to confirm that you can sign in to PICT. For information on the user registration procedure, refer to "PICT User Registration" in "Mimaki Cloud Technology PICT Online Help", and for information on how to sign in to PICT, refer to "Signing In To PICT".

● Launching PICT Up for the First Time

1. Procedure for Launching for the First Time

["Procedure for Launching for the First Time"\(P. 13\)](#)

2. Cloud Setup Procedure

["Cloud Setup Procedure"\(P. 17\)](#)

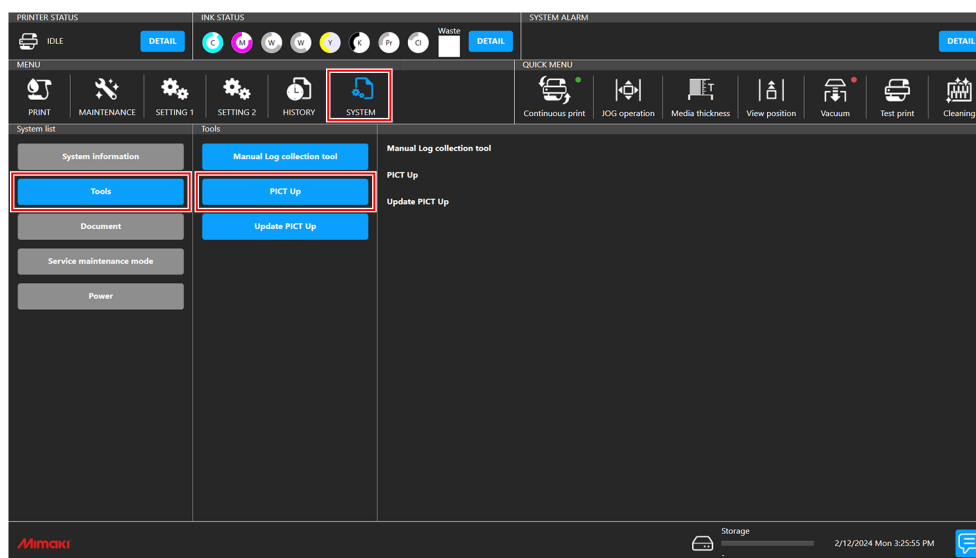
3. Printer Registration Checking

["Printer Registration Checking"\(P. 19\)](#)

2.2 Launching PICT Up for the First Time

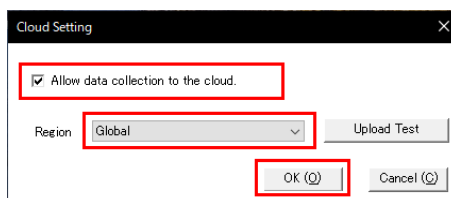
Procedure for Launching for the First Time

- 1 From the MPC [MENU], tap [SYSTEM] - [Tools] - [PICT Up].

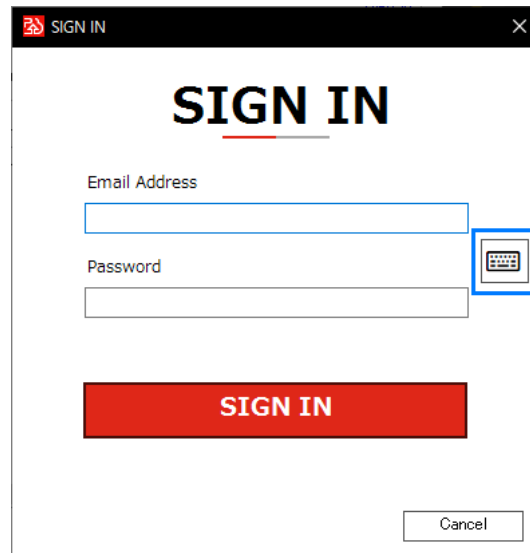


- 2 The [Consent Form] window and the [Cloud Setting] window appears when launching for the first time. Configure the settings, then tap [OK].
When launching for the second and subsequent time, skip to step 3.

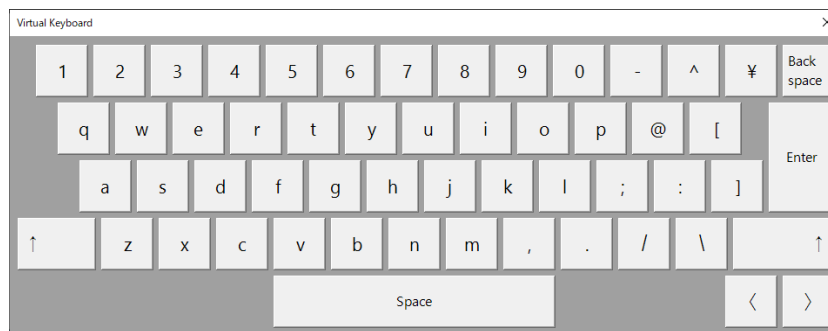
- For more information, refer to ["Cloud Setup Procedure"\(P. 17\)](#).



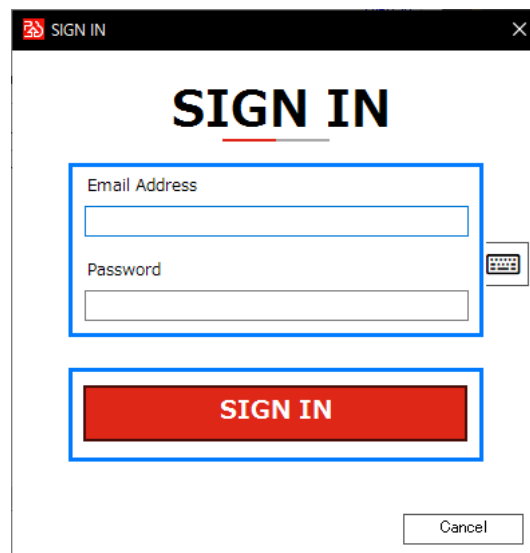
3 Tap [📄].



- A virtual keyboard is displayed.



4 Use the virtual keyboard to enter the email address and password for the account created using PICT, then tap [SIGN IN].

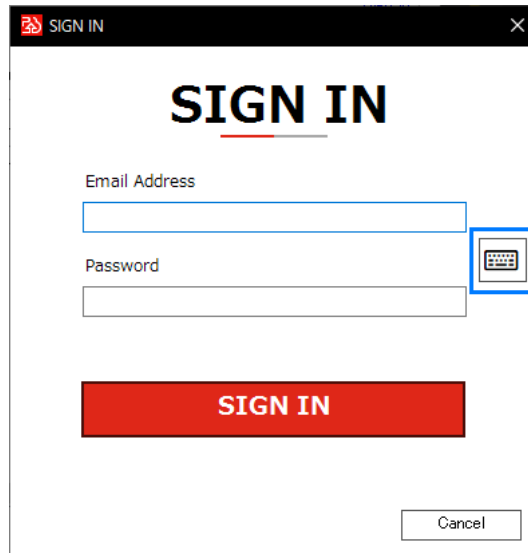


Using the virtual keyboard

The virtual keyboard is used as follows:

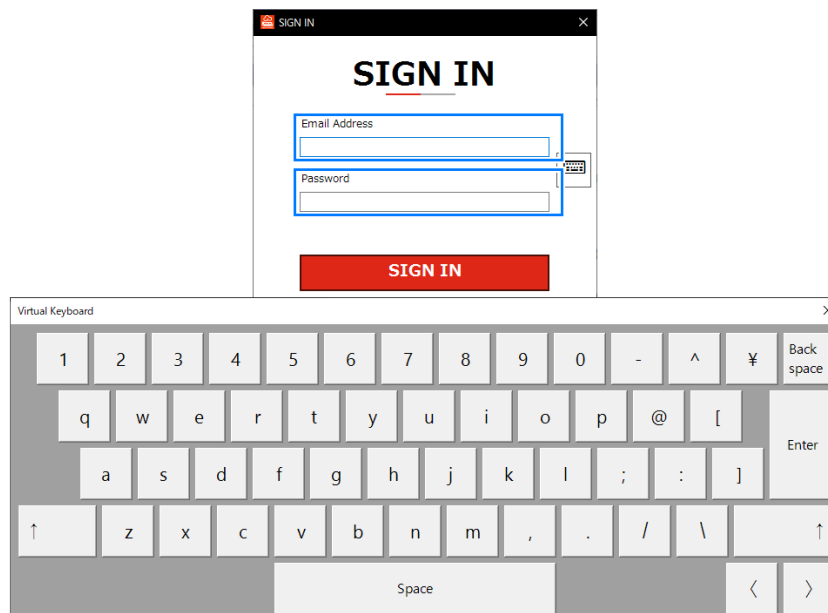
● Display the virtual keyboard

- Tap .



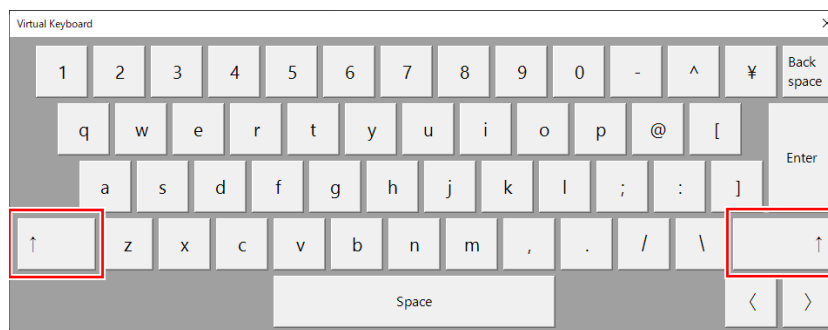
● Change the input field

- With the virtual keyboard displayed, tap the E-mail address or Password input field.



● Input upper case letters and symbols

- Tap [↑].
The buttons on the virtual keyboard change.



- The [↑] button toggles the keyboard input mode. Tapping the button again returns to lower case input.
- The buttons on the left and right side are linked, so tapping either has the same action.

● Delete an entered character

- Tap [Backspace].
The character to the left of the input cursor is deleted.



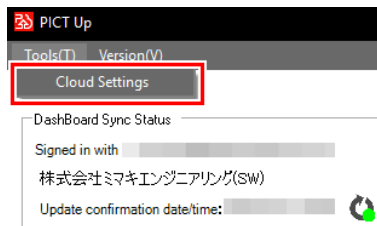
● Move the input cursor

- Tap [<] or [>].
The input cursor moves one character to the left or to the right.



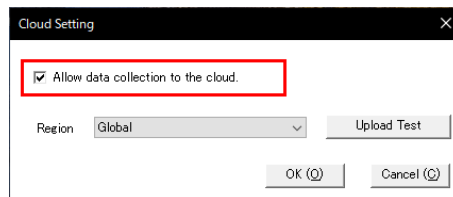
Cloud Setup Procedure

1 Tap [Cloud Settings] in the [Tool] menu.



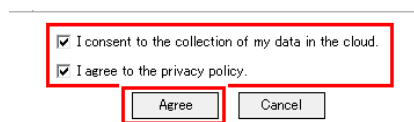
- The [Cloud Settings] dialog appears.

2 Select the [Allow data collection to the cloud.] check box.



- If consent for data collection has not yet been given, the [Consent Form] window appears for confirming that the user agrees to allow data collection.
- Make sure of the data collection agreement and privacy policy.

3 If there is no problem, select the two check boxes, then tap [Agree].

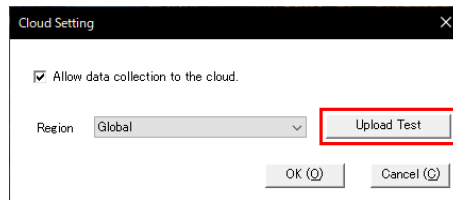


- Selecting the two check boxes enables the [Agree] button.

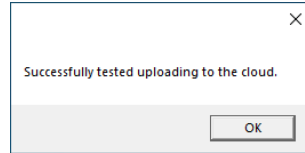


- Once agreement has been given, the agreement window will not subsequently appear when settings are changed.

4 Tap [Upload Test].



- A test is carried out to upload data to the cloud, and the results are displayed.



- If uploading fails, check that the PC is connected to the Internet.

5 Tap [OK].

- The settings are saved.

Printer Registration Checking

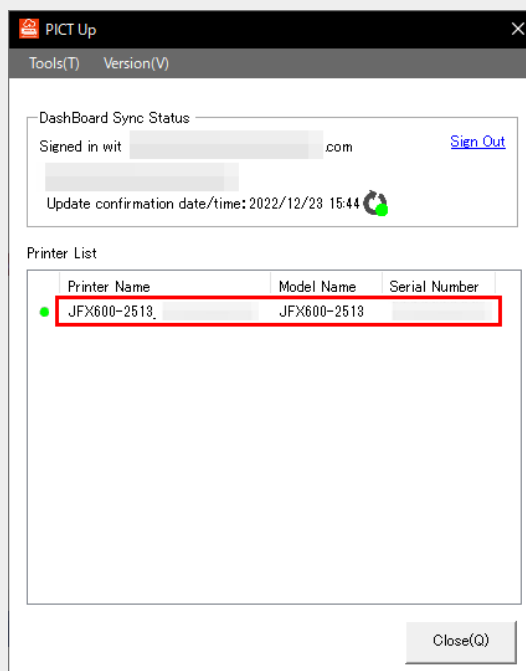
1 The printer is registered the first time it is started up. Check the printer details registered.



- The procedure for checking the printer serial number is as follows:
 - From the MPC [Menu], tap [SYSTEM] - [SYSTEM information].
 - Check [Machine information] - [SERIAL No].



- Additional printers cannot be registered.



2 Check to confirm that this machine is displayed on the PICT dashboard.



- PICT cannot be accessed from the Printer Control PC.


3 Access the PICT dashboard.



- The URL for the sign-in page is as follows:
<https://mcloudtec.mimaki.com>

4 Check to confirm that the data has been uploaded to PICT.

Printer List > JFX600-2513



JFX600-2513

Model : JFX600-2513 S/N: Firmware Version: Group :
 Last Updated: 2023/1/19 8:38:04

Ready ⋮

Printer Status
Operating Results
Print History
Maintenance History
Setting and Manual

Print Status

Progress: 0 %

Print Length: 0.0m /0.0m (0/0Layer)

Ink Information Inkset: LH-100 4Color

Ink levels :

M	<div style="width: 40%; background-color: magenta;"></div>	40 %	400 ml	Expiration Date:23/03
C	<div style="width: 30%; background-color: cyan;"></div>	30 %	300 ml	Expiration Date:23/02
Y	<div style="width: 60%; background-color: yellow;"></div>	60 %	600 ml	Expiration Date:23/03
K	<div style="width: 80%; background-color: black;"></div>	80 %	800 ml	Expiration Date:23/04
K	<div style="width: 80%; background-color: black;"></div>	80 %	800 ml	Expiration Date:23/03
Y	<div style="width: 10%; background-color: yellow;"></div>	10 %	100 ml	Expiration Date:22/12
C	<div style="width: 30%; background-color: cyan;"></div>	30 %	300 ml	Expiration Date:23/07
M	<div style="width: 40%; background-color: magenta;"></div>	40 %	400 ml	Expiration Date:23/08

Printable size : Effective Print Width : 2,500 mm
 Effective Print Length : 1,300 mm

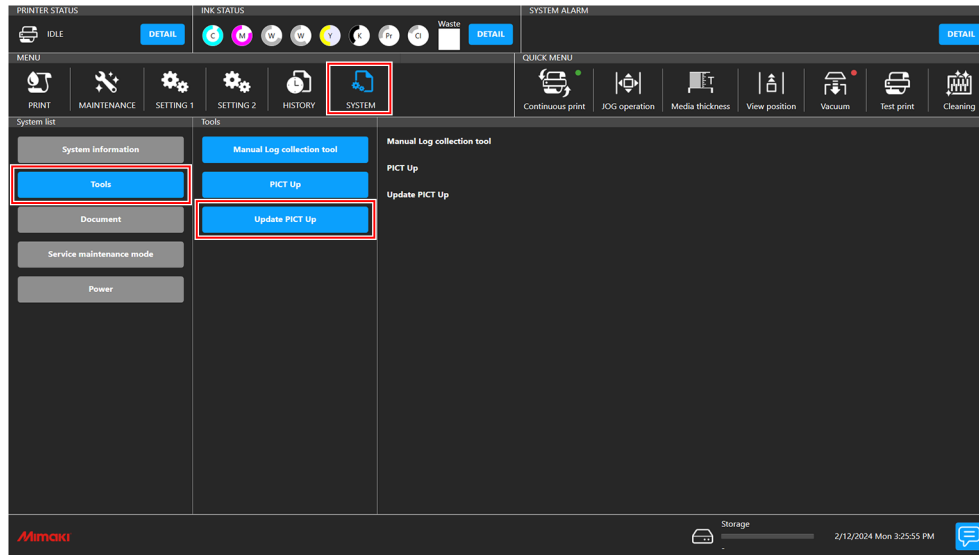
2.3 Updating PICT Up

Update Timing

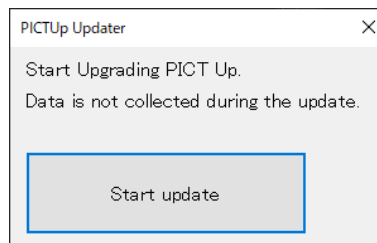
The procedure for updating the PICT Up version is as follows:

- Important!** • Data collection stops while PICT Up is being updated.

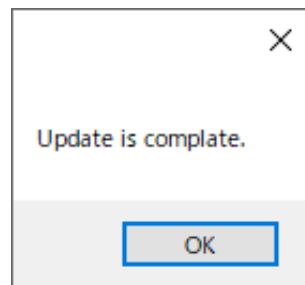
1 From MPC, tap [SYSTEM] - [Tools] - [Update PICT Up].



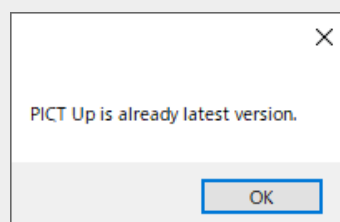
2 Tap [Start update].



- PICT Up updating starts.



- If [PICT Up is already latest version.] is displayed, this indicates that the latest version is already installed.



Chapter 3 Troubleshooting



This chapter

Below describes how to resolve any problems that may arise and helps clarify any operational procedures that may be unclear. For more information, refer to "Troubleshooting" in the "Mimaki Cloud Technology PICT Online Help".

Troubleshooting.....	24	I want to check the data upload settings.....	24
I've forgotten my password	24	No virtual keyboard buttons are displayed ..	24

3.1 Troubleshooting

I've forgotten my password

Access the PICT sign-in page, and reset the password.

Sign-in page: <https://mcloudtec.mimaki.com/>



- Certain PICT Up data uploading functions will be restricted when signing in with an account for which the password has been reset. Sign in once again using the new password.

I want to check the data upload settings



- This applies only when using PICT Up installed on the Printer Control PC.

- 1 From the MPC [MENU], tap [SYSTEM] - [Tools] - [PICT Up].
- 2 Tap [Menu] - [Cloud Settings].
- 3 Check the [Allow data collection to the cloud.] check boxes selected.
 - If the check boxes have not been set correctly, change the settings as necessary.

No virtual keyboard buttons are displayed



- This applies only when using PICT Up installed on a RIP PC.

- The virtual keyboard is displayed only with PICT Up installed on the Printer Control PC.
- When signing in to PICT from PICT Up installed on a client PC, use the PC keyboard.

PICT for MPC equipped machines Setup Guide

April, 2024

MIMAKI ENGINEERING CO.,LTD.

2182-3 Shigeno-otsu, Tomi-shi, Nagano 389-0512 JAPAN

D203685-11-22042024

