



Color Replacement Guide

<Basics>

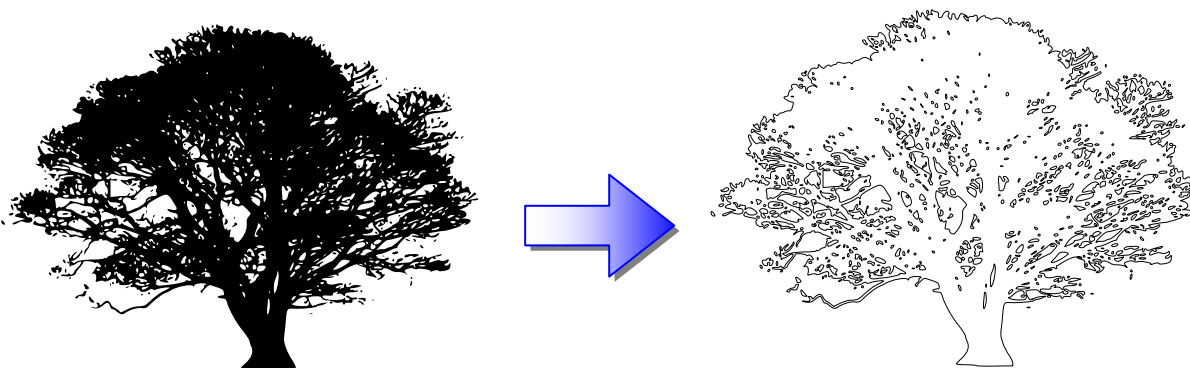
For RasterLinkPro 2 to 5

Contents

<i>1. When Printing Like This...</i>	p.3
<i>2. Color Replacement of One Color</i>	p.5
<i>3. Color Replacement of Multiple Colors</i>	p.10
<i>4. Color Replacement of Gradation</i>	p.15

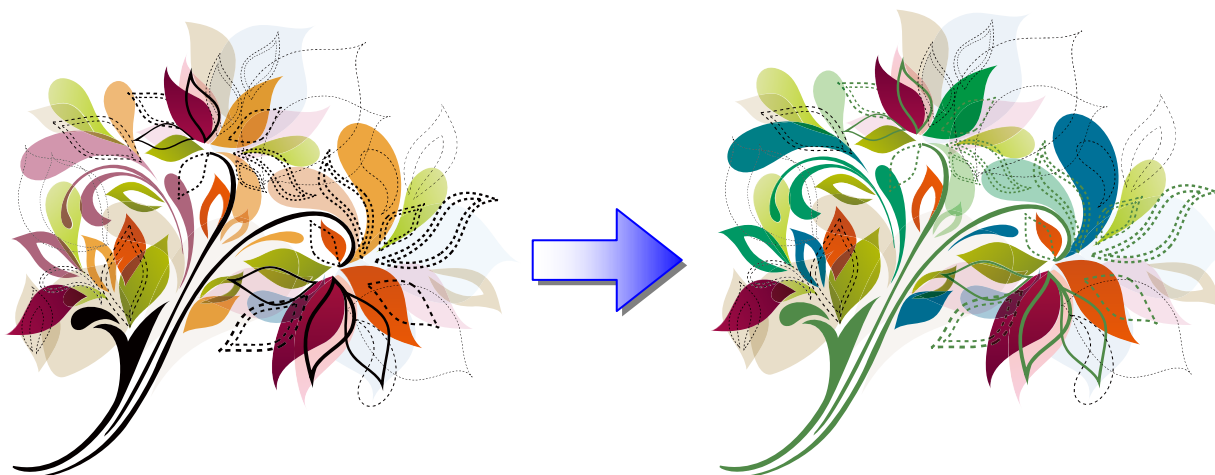
1. When Printing Like This...

Example 1: Let's change the color to white!



This example describes “How to change the color from black to white”.
When printing like this... → Go to “[2. Color Replacement of One Color](#)”

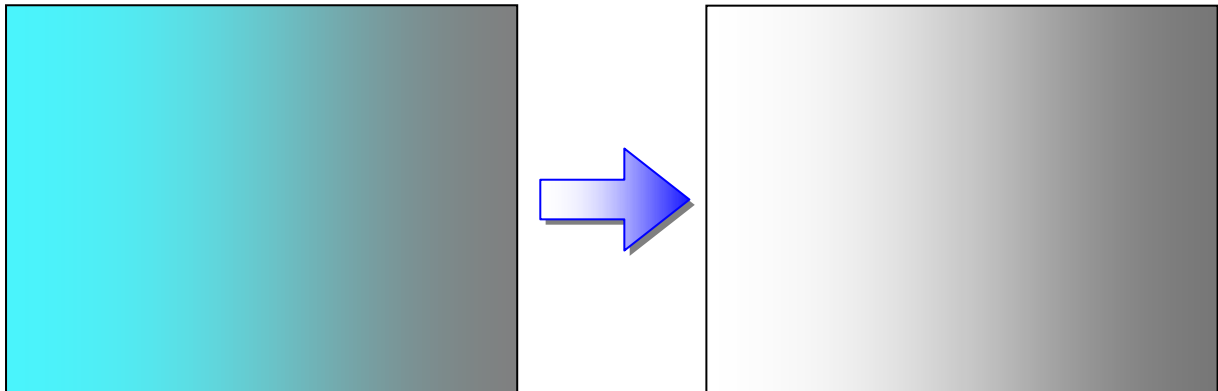
Example 2: Let's change more colors!



This example describes “How to change orange/yellow/black to green/magenta/white”.

When printing like this... → Go to “[3. Color Replacement of Multiple Colors](#)”

Example 3: Let's change the color of gradation

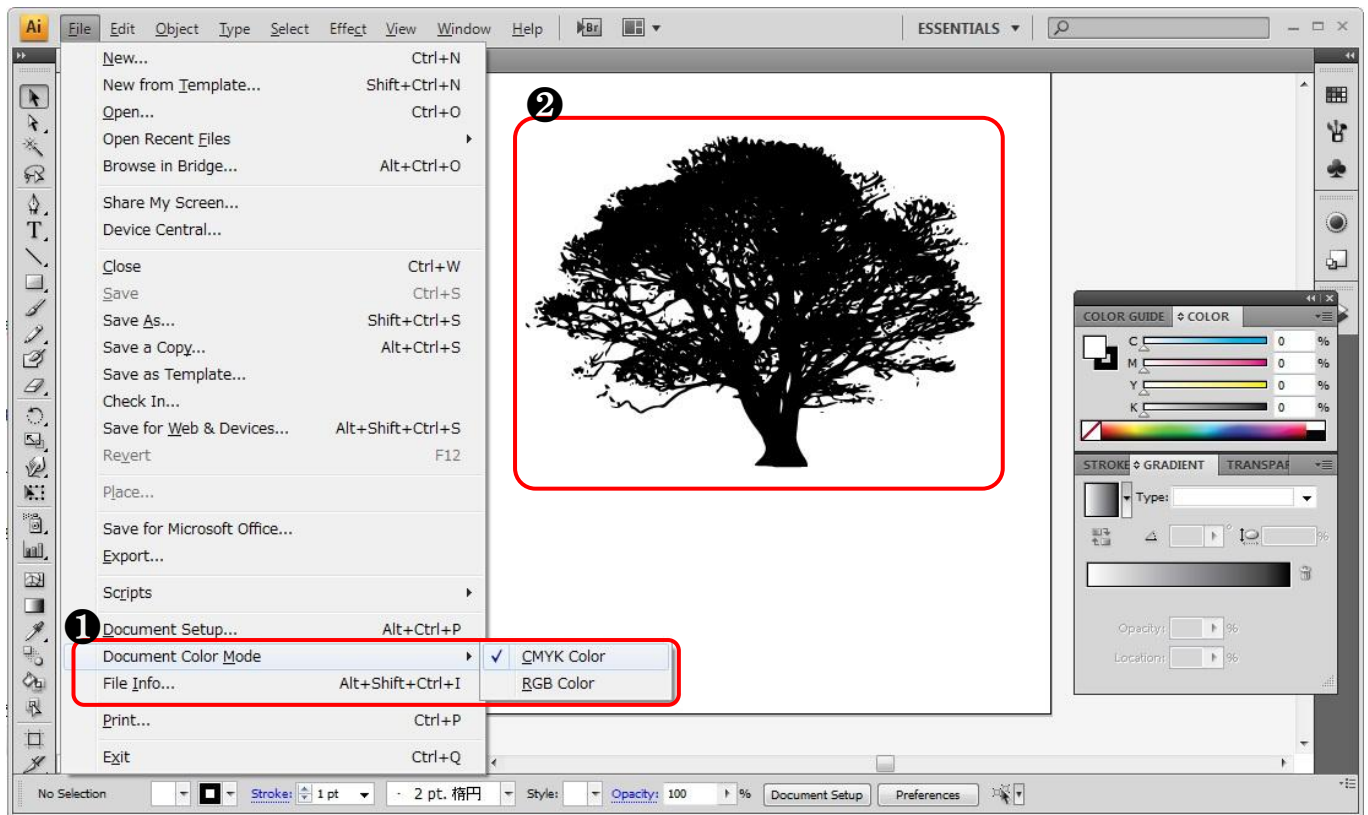


This example describes “How to change the color of gradation from cyan to white”.
When printing like this... → Go to “[4. Color Replacement of Gradation](#)”

2. Color Replacement of One Color

Example 1. How to change the color from black to white

1) Create an image in solid black using Adobe Illustrator.



❶ Select “CMYK Color” in Document Color Mode.

❷ Create an image in solid black.
Black (C=0, M=0, Y=0, K=100)

Conditions for color replacement of one color (Mono color replacement)

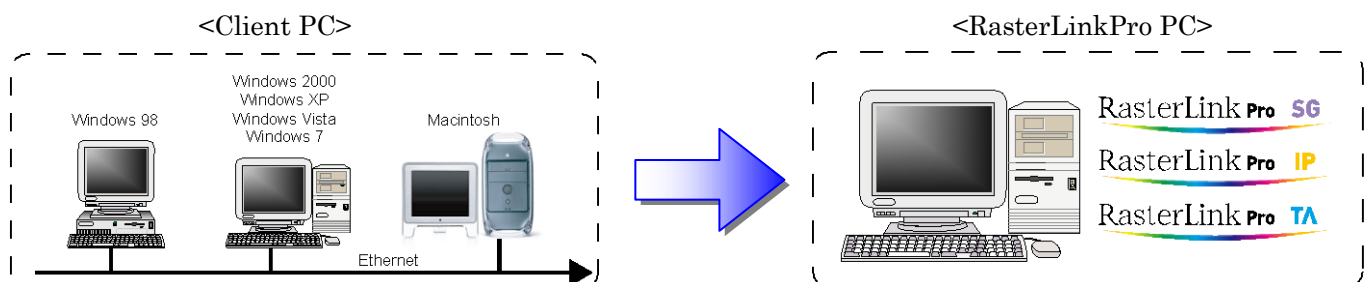
- Replacement can be done for the files in which “Document Color Mode” is set to “CMYK Color”.
- The color of both graphics (EPS or AI format) and images (BMP or JPEG format, etc.) can be replaced.
For the details, refer to the following manual.
➔ RLP5SG Reference Guide “Method of creating Color Replacement images” (Document No. D202029)

2) Save the graphic data.

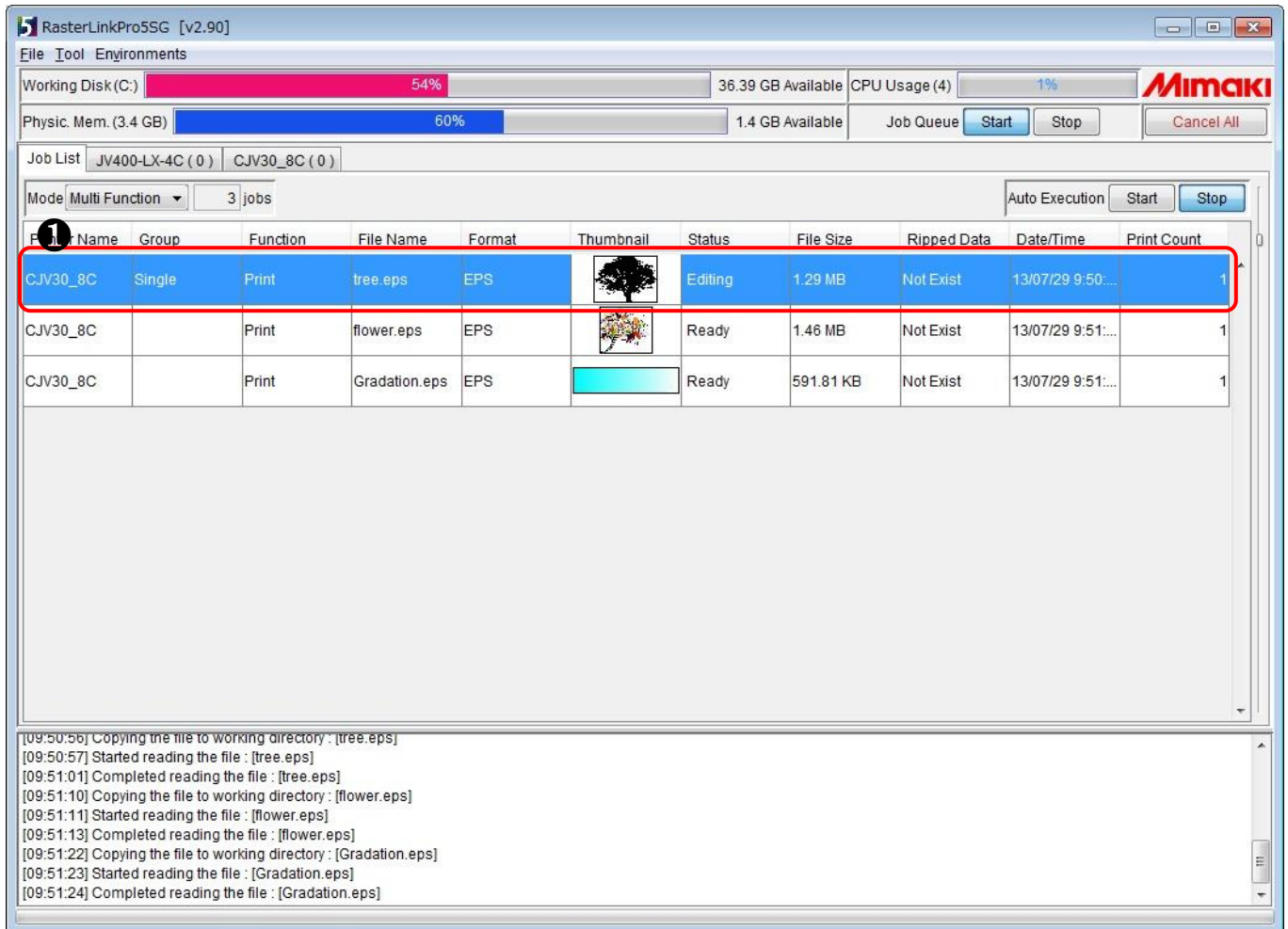
In EPS (When outputting it using a hot folder) or in AI (When outputting it using a printer driver).

3) Send the data to RasterLinkPro.

As hot folder output or printer driver output.



4) Start up Job Editor.



- ① Select the job whose color you want to replace, and right-click on it and select “Edit”.

Job Editor starts up.

Job Editor can be started up by double-clicking the selected job.

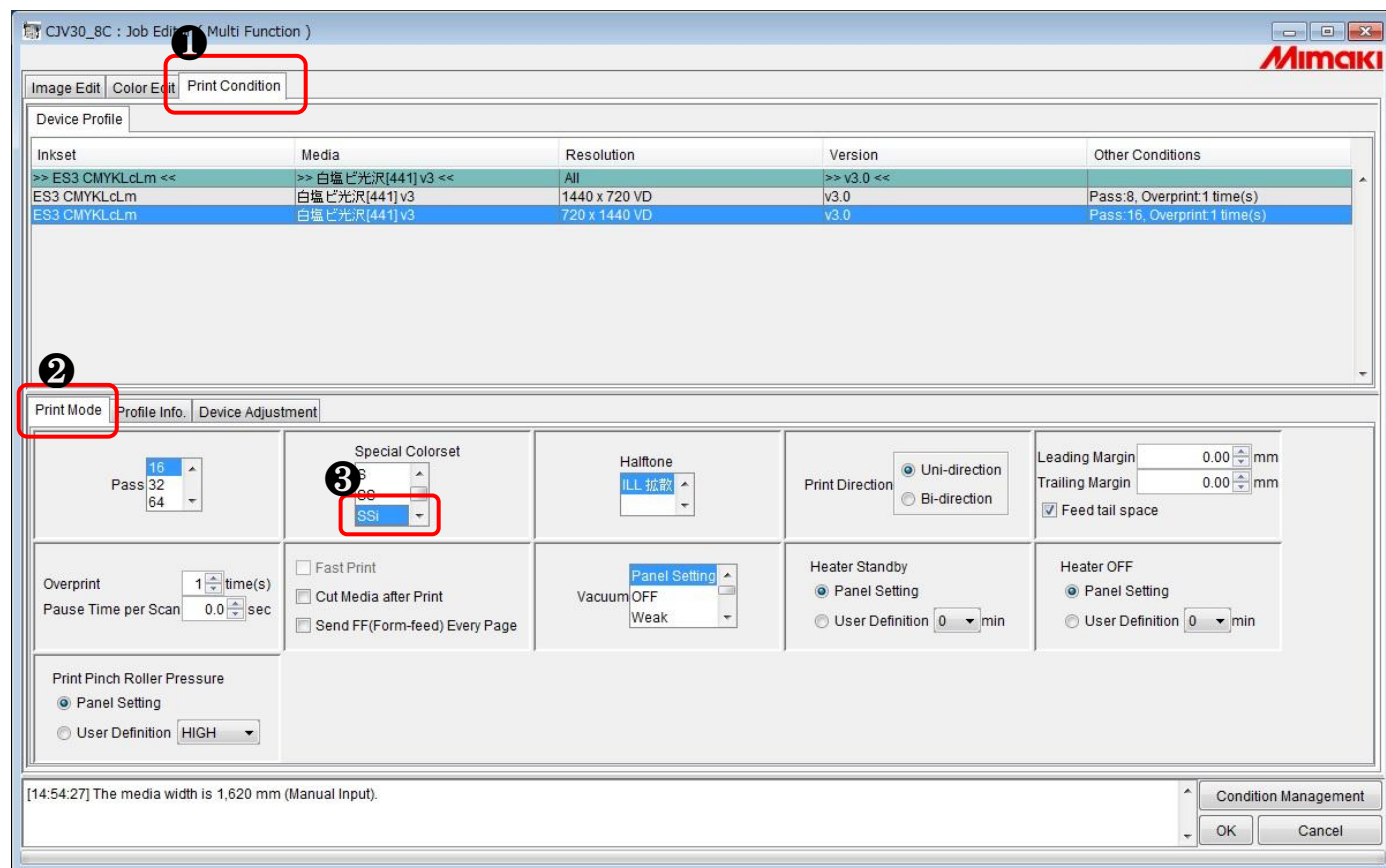
Printer name

The printer name and format may differ depending on your usage environment.

Properties...	Shift+E
Edit...	Ctrl+E
Clear Group	Ctrl+U
Immediate Print	Ctrl+1
RIP and Print	Ctrl+2
RIP Only	Ctrl+3
Print Only	Ctrl+4
Duplicate	Ctrl+D
Backup...	Ctrl+B
Delete Ripped Data	Ctrl+Backspace
Delete All Data	Ctrl+Delete
Select All	Ctrl+A
Unselect All	Ctrl+Z
Cut	

5) Change the setting so you can use white.

* Connect the printer in advance.



- ❶ Click [Print Condition].
- ❷ Click [Print Mode].
- ❸ Select an item such as [SSi] or [SS].

When changing the color to white

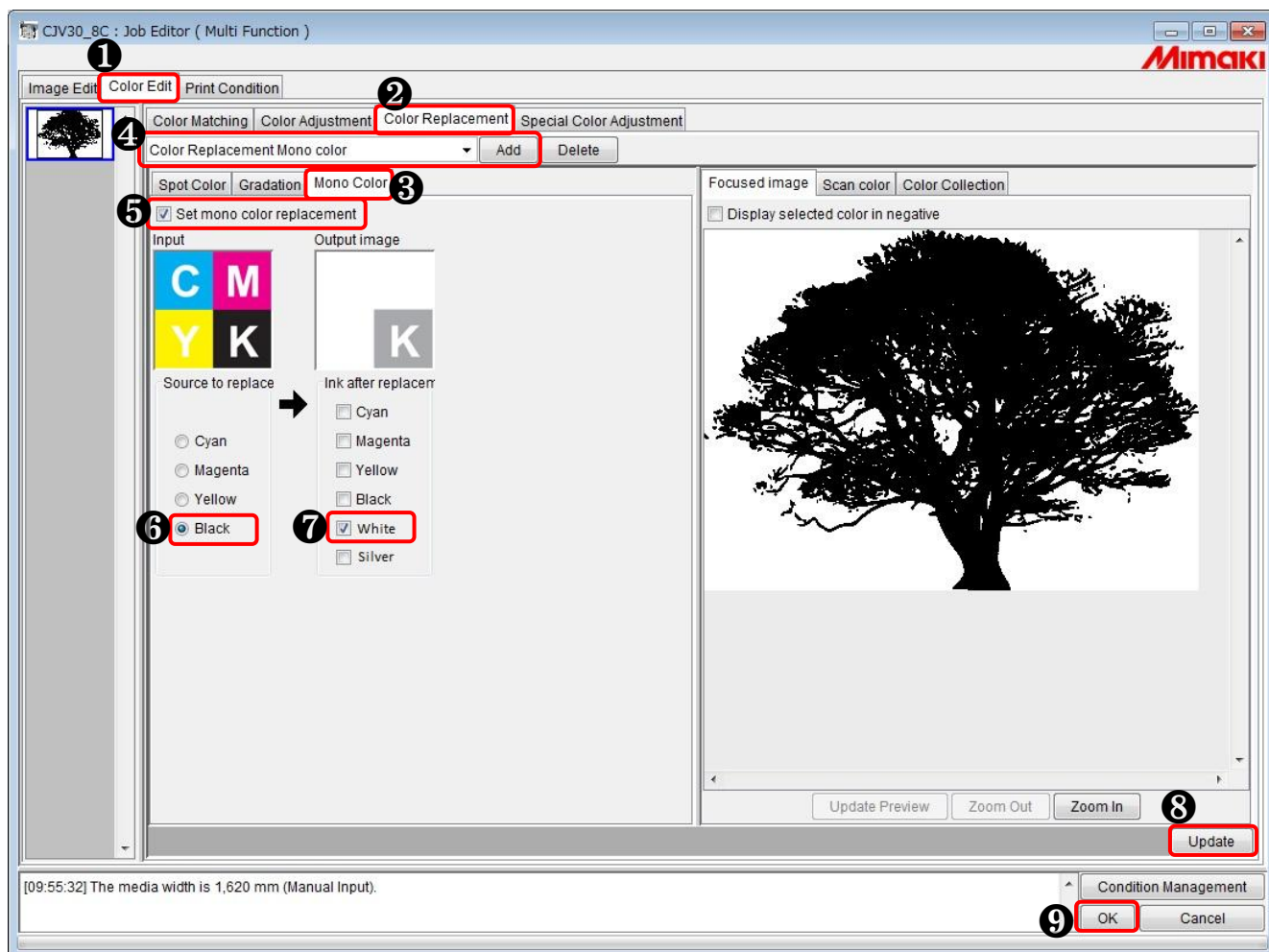
- Make sure to connect the printer before making settings.
- Select an item [w, ww, s, ss, or ssi] of "Special Colorset" in Print Condition. Otherwise, "White" and "Silver" do not appear in the output settings.
For the details on "Special Colorset", see the following manual.
➔ RLP5SG Reference Guide "Method of creating Color Replacement images" (Document No. D202029)

Colorset name

The name such as "ES3" or "SS21" may differ depending on your usage environment.

6) Configure the setting for mono color replacement.

* Connect the printer in advance.



- ❶ Click [Color Edit].
- ❷ Click [Color Replacement].
- ❸ Click [Mono Color].
- ❹ Enter a name for this color replacement and click [Add].
- ❺ Select the "Set mono color replacement" check box.
- ❻ Select "Black" in Source to replace.
- ❼ Select "White" in Ink after replacement.
- ❽ Click [Update].
- ❾ Click [OK].

Caution about mono color replacement

The colors other than replaced color are not printed.

When selecting white or silver for ink after replacement

Make sure to connect the printer beforehand if you select white or silver for ink after replacement.

7) Print the data.

Job Name	Group	Function	File Name	Format	Thumbnail	Status	File Size	Ripped Data	Date/Time	Print Count
CJV30_8C	Single	Print	tree.eps	EPS		Editing	1.29 MB	Not Exist	13/07/29 9:50:...	1
CJV30_8C		Print	flower.eps	EPS		Ready	1.46 MB	Not Exist	13/07/29 9:51:...	1
CJV30_8C		Print	Gradation.eps	EPS		Ready	591.81 KB	Not Exist	13/07/29 9:51:...	1

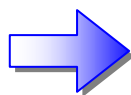
```

[09:50:56] Copying the file to working directory : [tree.eps]
[09:50:57] Started reading the file : [tree.eps]
[09:51:01] Completed reading the file : [tree.eps]
[09:51:10] Copying the file to working directory : [flower.eps]
[09:51:11] Started reading the file : [flower.eps]
[09:51:13] Completed reading the file : [flower.eps]
[09:51:22] Copying the file to working directory : [Gradation.eps]
[09:51:23] Started reading the file : [Gradation.eps]
[09:51:24] Completed reading the file : [Gradation.eps]
    
```

- 1 Select the job to print and right-click on it, then click “RIP and Print” or the like.

Properties...	Shift+E
Edit...	Ctrl+E
Clear Group	Ctrl+U
Immediate Print	Ctrl+1
RIP and Print	Ctrl+2
RIP Only	Ctrl+3
Print Only	Ctrl+4
Duplicate	Ctrl+D
Backup...	Ctrl+B
Delete Ripped Data	Ctrl+Backspace
Delete All Data	Ctrl+Delete
Select All	Ctrl+A
Unselect All	Ctrl+Z
Cut	

- 8) The print result is as follows.

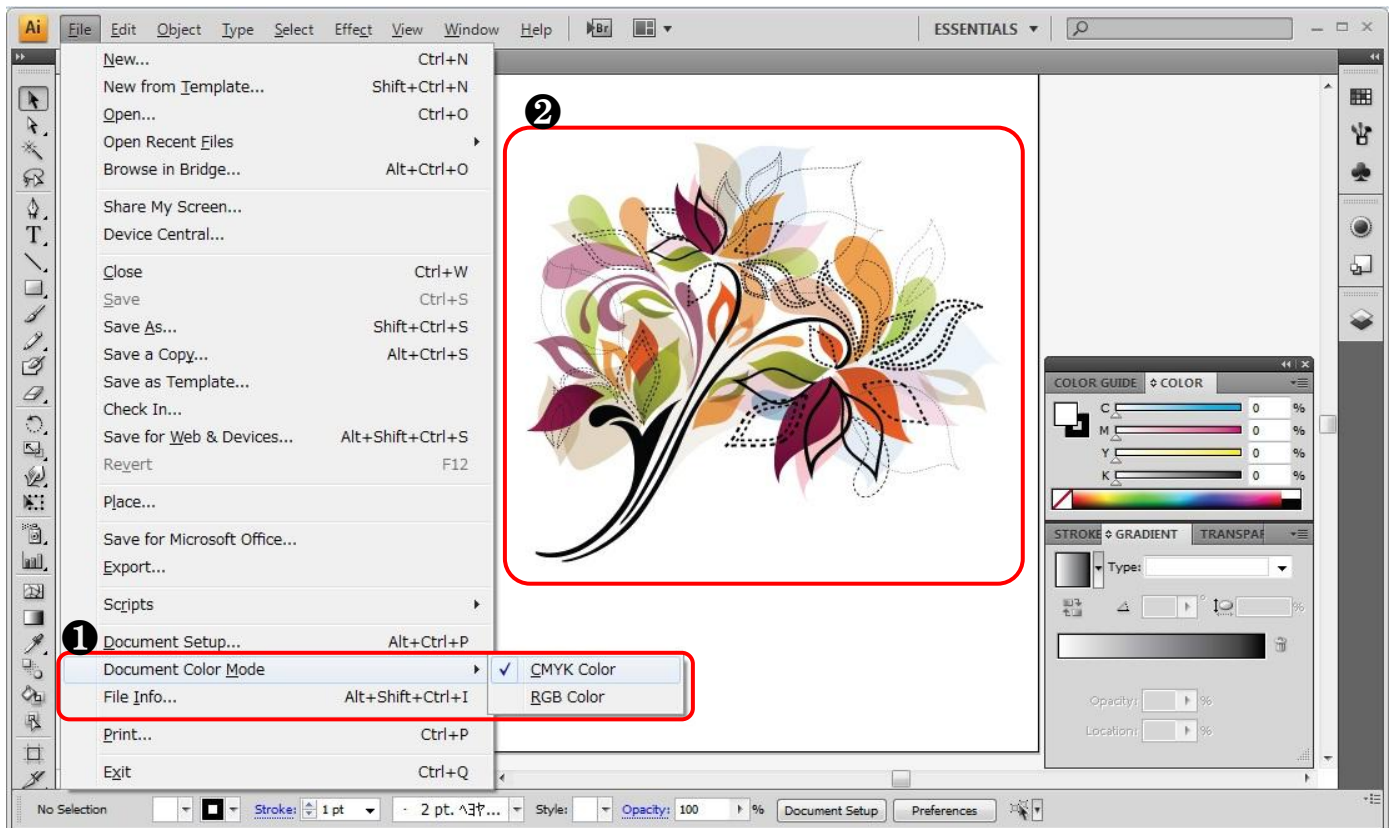


Done!

3. Color Replacement of Multiple Colors

Example 2. How to change orange/yellow/black to green/magenta/white

1) Create an image in multiple colors using Adobe Illustrator.



① Select “CMYK Color” in Document Color Mode.

② Create an image in multiple colors.

Bell: Orange (C=6, M=51, Y=93, K=0)
 Hands: Yellow (C=0, M=0, Y=100, K=0)
 Dial: Black (C=0, M=0, Y=0, K=100)
 Trim: Cyan (C=100, M=0, Y=0, K=0)

Cautions for color replacement of Multiple colors (Multi color replacement)

- Replacement can be done for the files in which “Document Color Mode” is set to “CMYK Color”.
- Only the color of graphics (EPS or AI format) can be replaced. The color of images (BMP or JPEG format, etc.) cannot be replaced.

For the details, refer to the following manual.

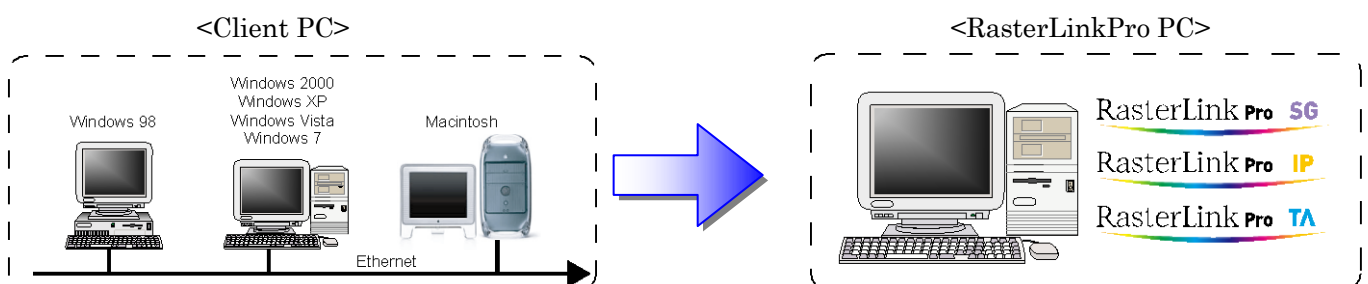
➔ RLP5SG Reference Guide “Method of creating Color Replacement images” (Document No. D202029)

2) Save the graphic data.

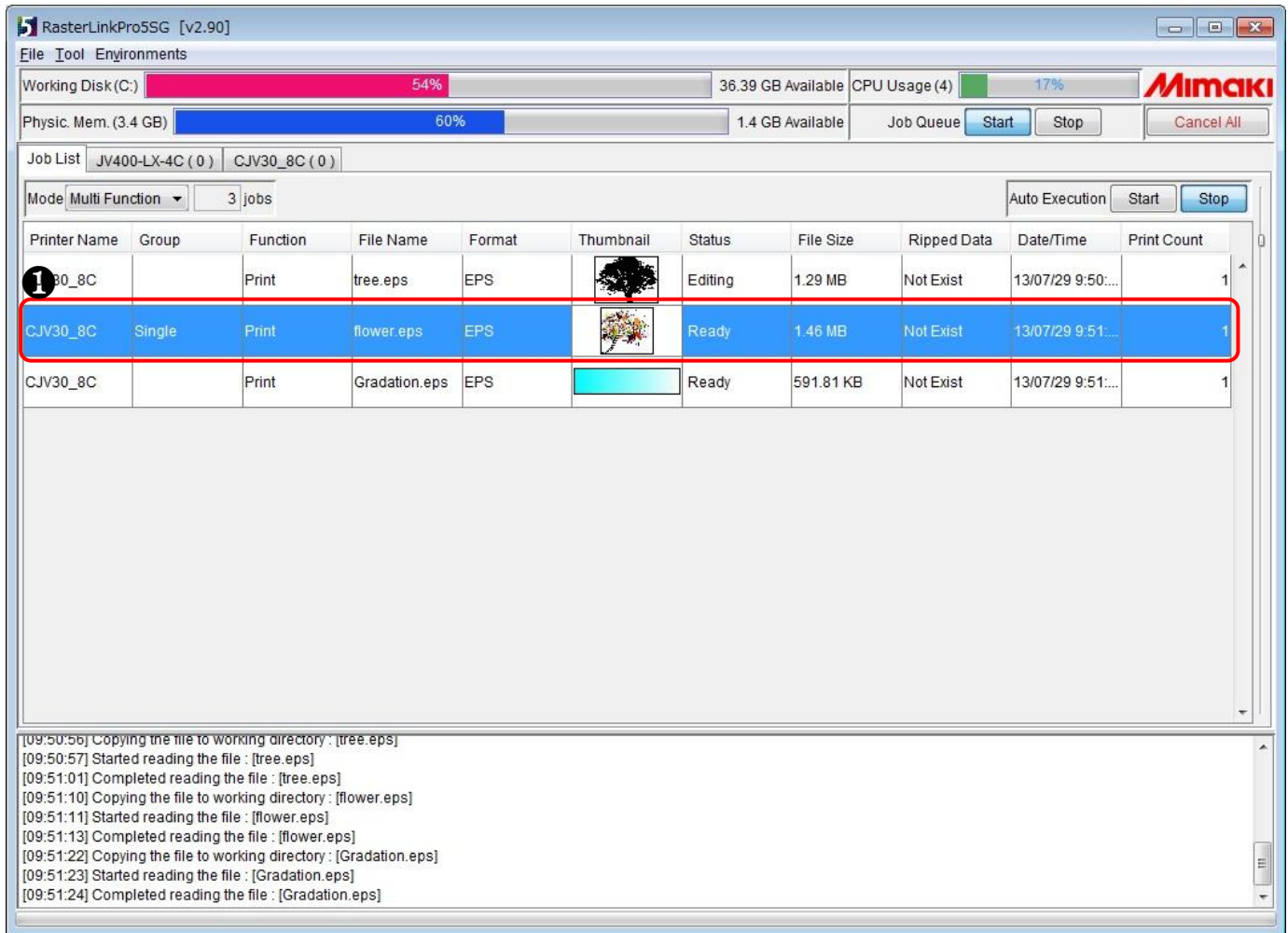
In EPS (When outputting it using a hot folder) or in AI (When outputting it using a printer driver).

3) Send the data to RasterLinkPro.

As hot folder output or printer driver output.



4) Start up Job Editor.



- ① Select the job whose colors you want to replace, and right-click on it and select “Edit”.
 Job Editor starts up.
 Job Editor can be started up by double-clicking the selected job.

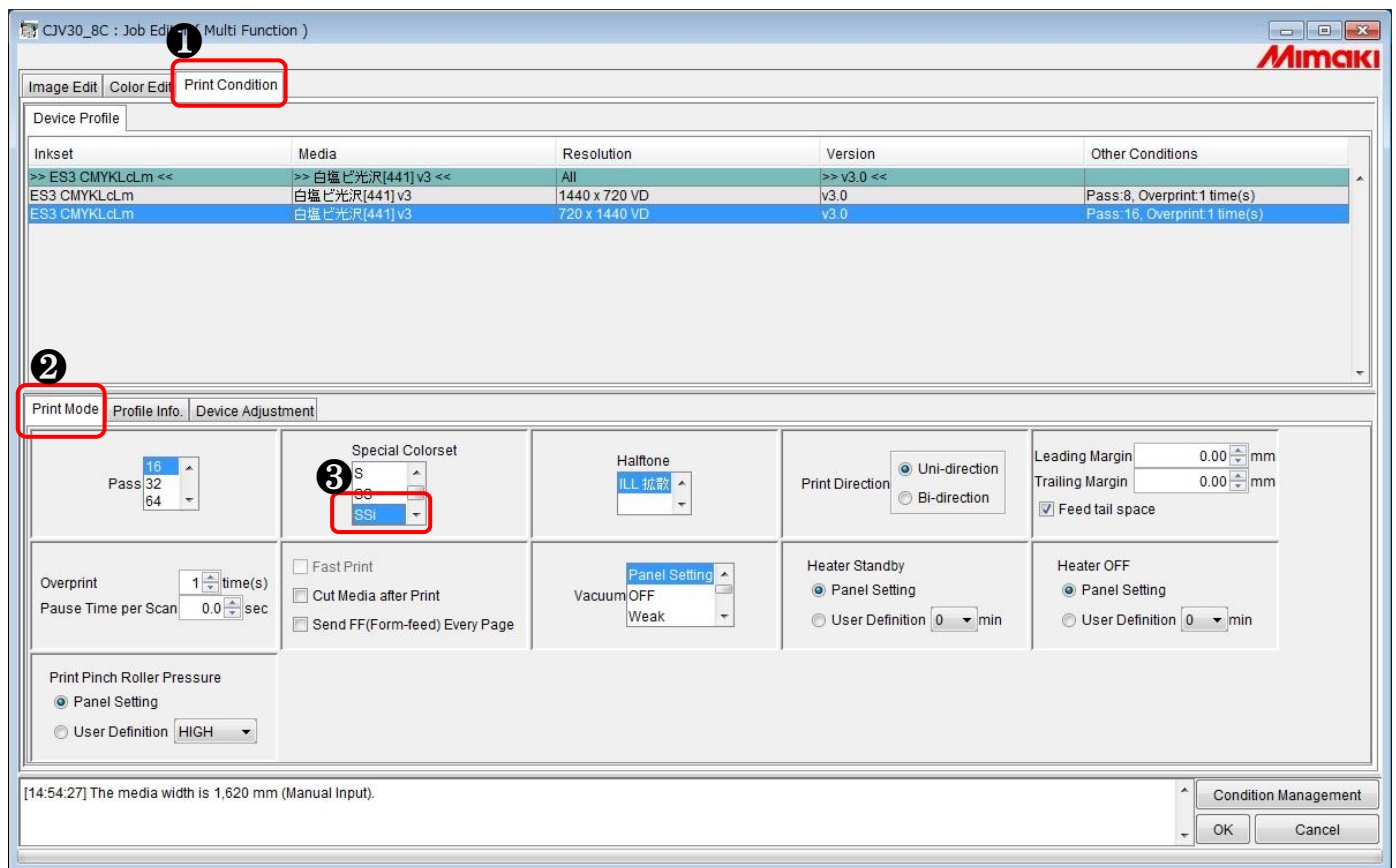
Properties...	Shift+E
Edit...	Ctrl+E
Clear Group	Ctrl+U
Immediate Print	Ctrl+1
RIP and Print	Ctrl+2
RIP Only	Ctrl+3
Print Only	Ctrl+4
Duplicate	Ctrl+D
Backup...	Ctrl+B
Delete Ripped Data	Ctrl+Backspace
Delete All Data	Ctrl+Delete
Select All	Ctrl+A
Unselect All	Ctrl+Z
Cut	

Printer name

The printer name and format may differ depending on your usage environment.

5) Change the setting so you can use white.

* Connect the printer in advance.



- ❶ Click [Print Condition].
- ❷ Click [Print Mode].
- ❸ Select an item such as [SSi] or [SS].

When changing the color to white

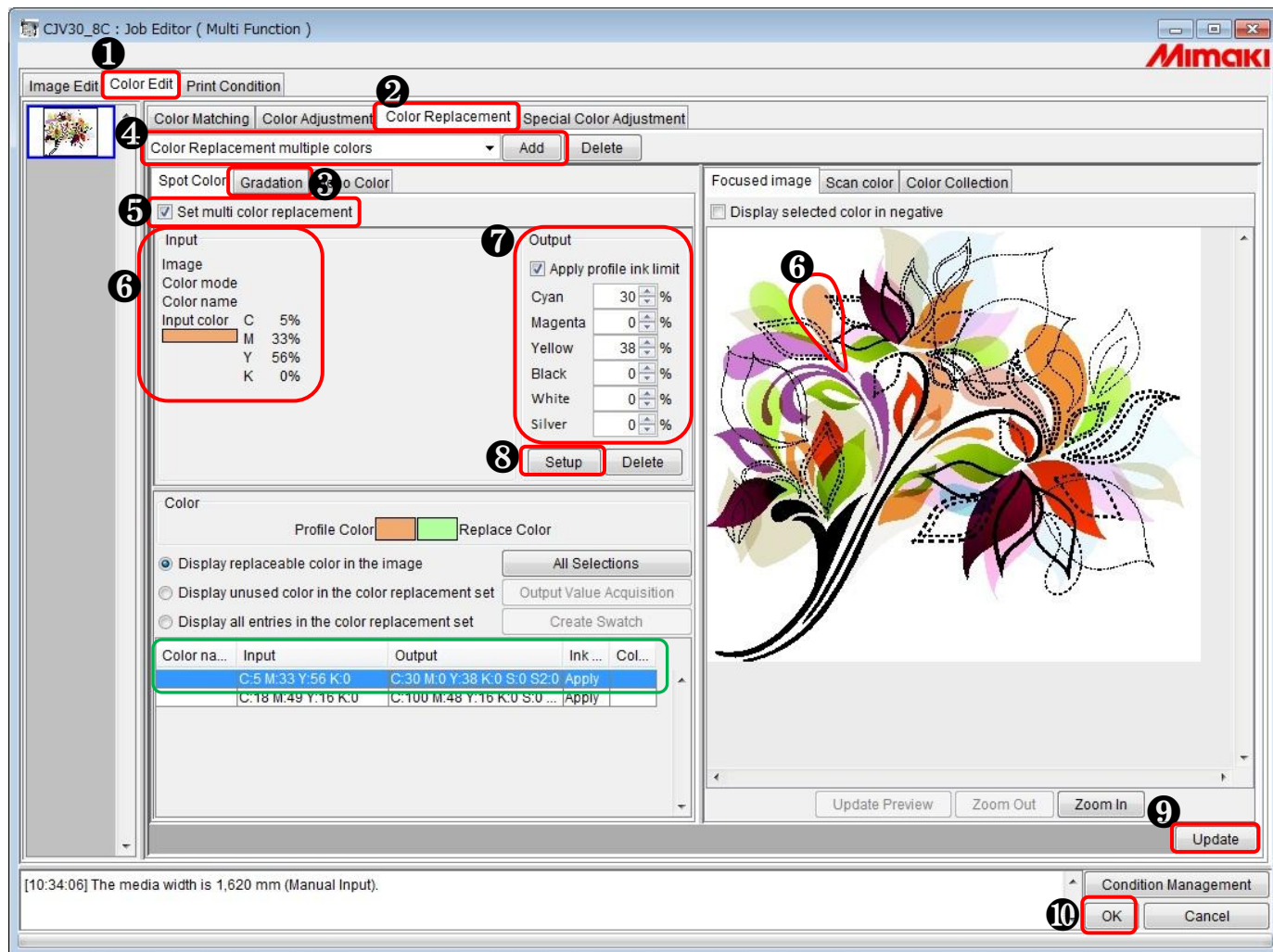
- Make sure to connect the printer before making settings.
- Select an item [w, ww, s, ss, or ssi] of “Special Colorset” in Print Condition. Otherwise, “White” and “Silver” do not appear in the output settings. For the details on “Special Colorset”, see the following manual.
 → RLP5SG Reference Guide (Document No. D202029)

Colorset name

The name such as “ES3” or “SS21” may differ depending on your usage environment.

6) Configure the setting for multi color replacement.

* Connect the printer in advance.



- ① Click [Color Edit].
 - ② Click [Color Replacement].
 - ③ Click [Spot Color].
 - ④ Enter a name for this color replacement and click [Add].
 - ⑤ Select the “Set multi color replacement” check box.
 - ⑥ On the preview screen, click Orange for the color to replace (Input).
 - ⑦ Select Green for the color after replacement (Output).
 - ⑧ Click [Setup].
- Repeat ⑥ to ⑧ when replacing the rest of the colors.
- ⑨ Click [Update].
 - ⑩ Click [OK].

How to check specified colors

In “Input” and “Output” enclosed in green, the proportions (%) of CMYK component colors are displayed.

Condition for color replacement of one color (Multi color replacement)

- The “Image” type in ⑥ is illustration only. Multi color replacement cannot be made for photos and such. For the details, refer to the following manual.
→ RLP5SG Reference Guide “Method of creating Color Replacement images” (Document No. D202029)
- Replacement can be done for the files in which “Document Color Mode” is set to “CMYK Color”.

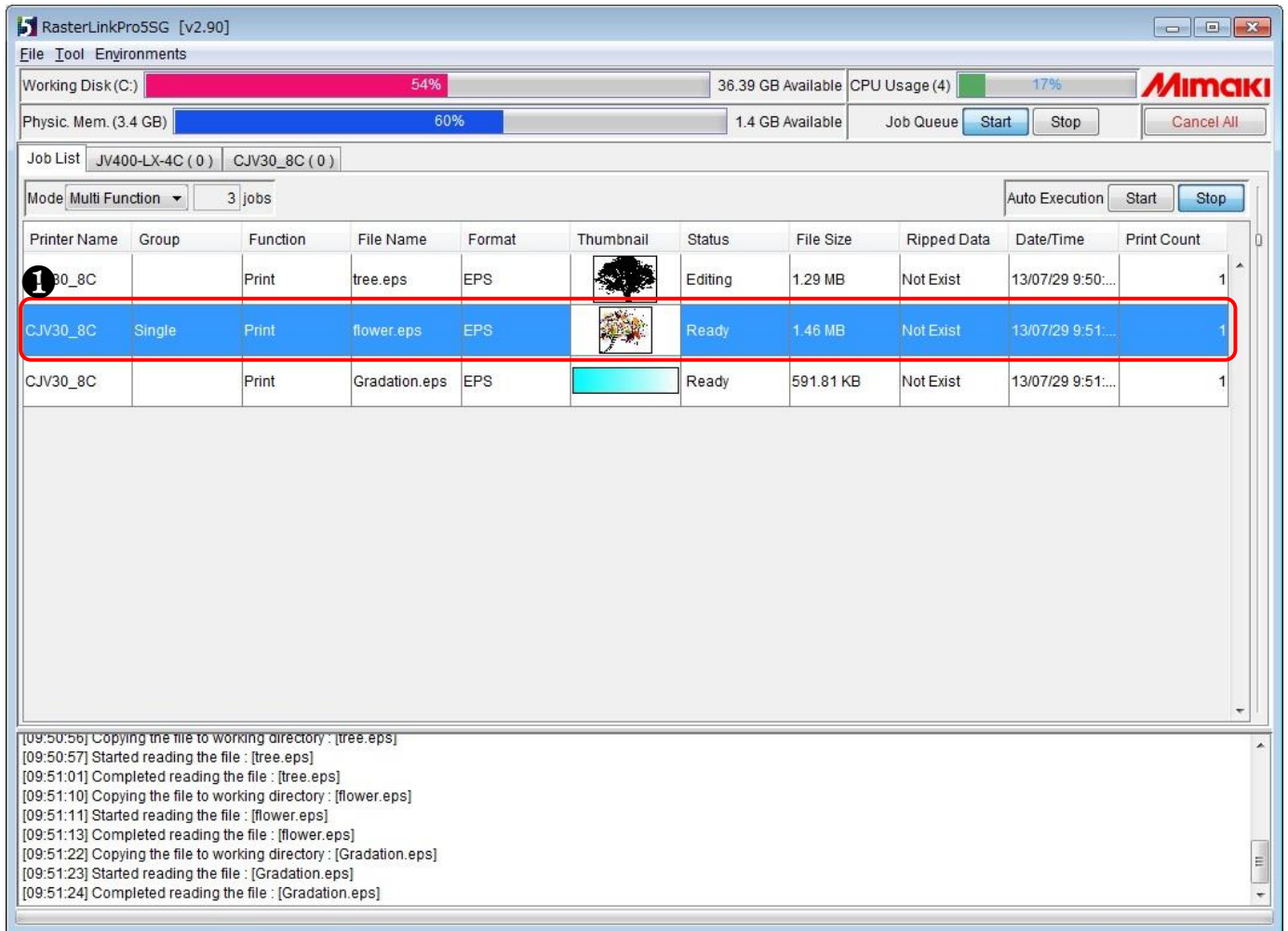
Caution about multi color replacement

If there are any parts where the same orange is used other than the bell on the clock, such color is also replaced by green.

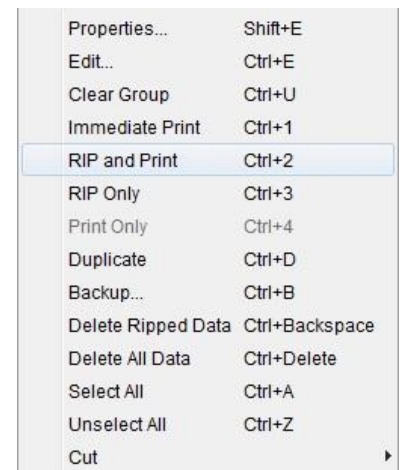
When selecting white or silver for the color after replacement

Make sure to connect the printer beforehand if you select white or silver for ink after replacement.

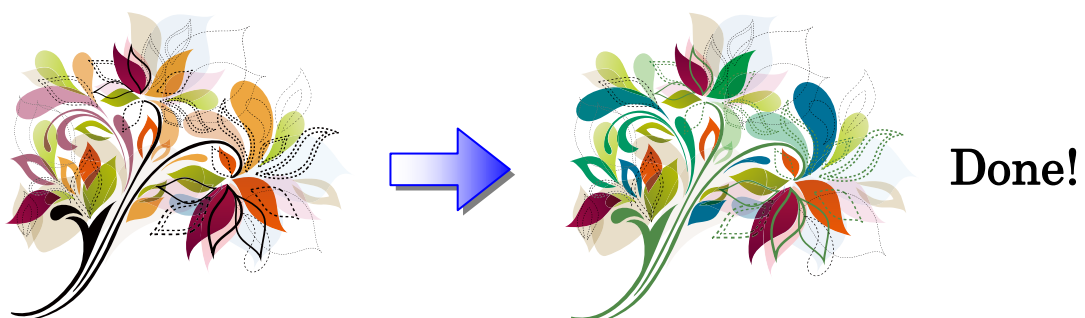
7) Print the data.



- ① Select the job to print and right-click on it, then click “RIP and Print” or the like.



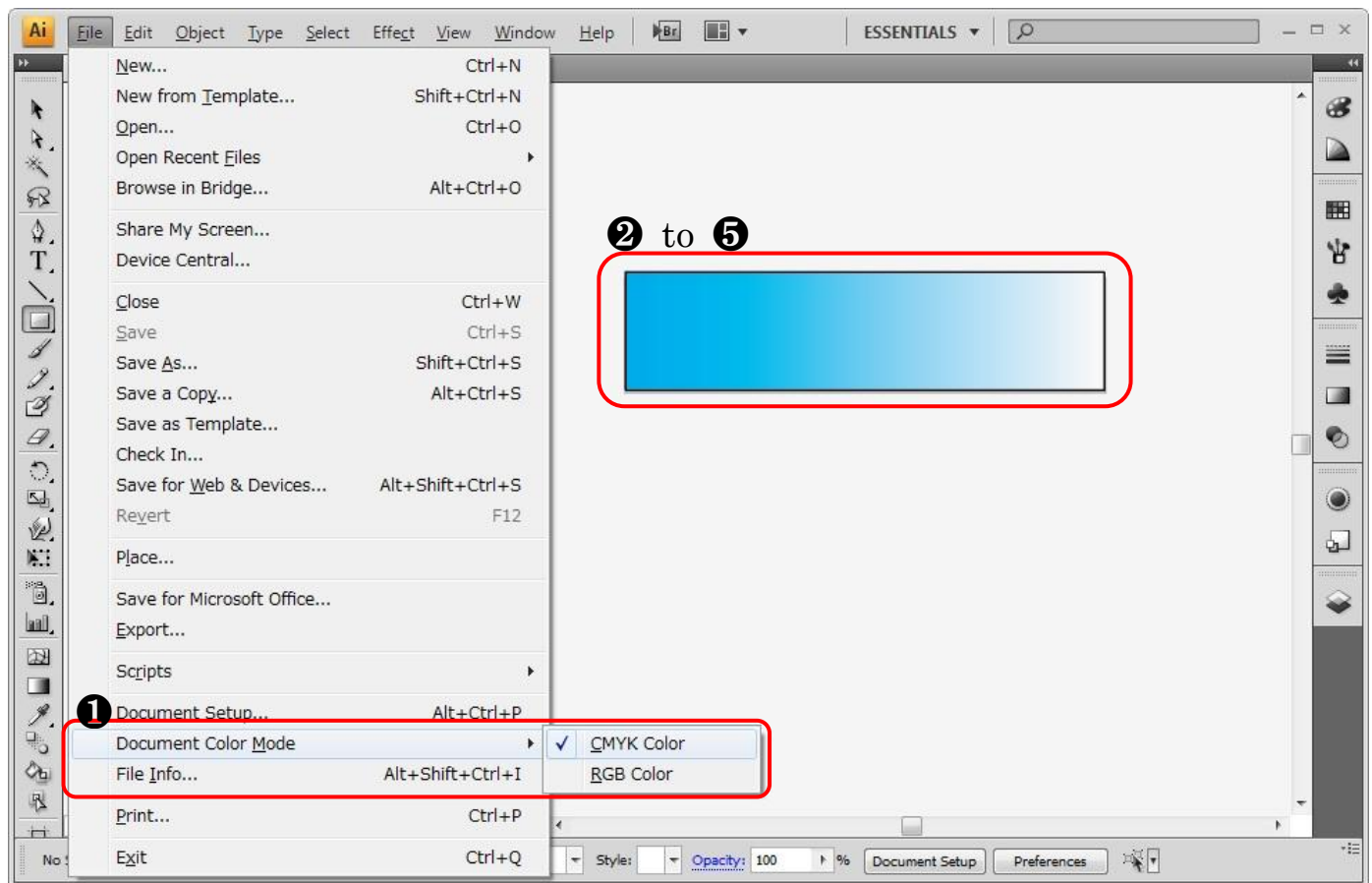
- 8) The print result is as follows.



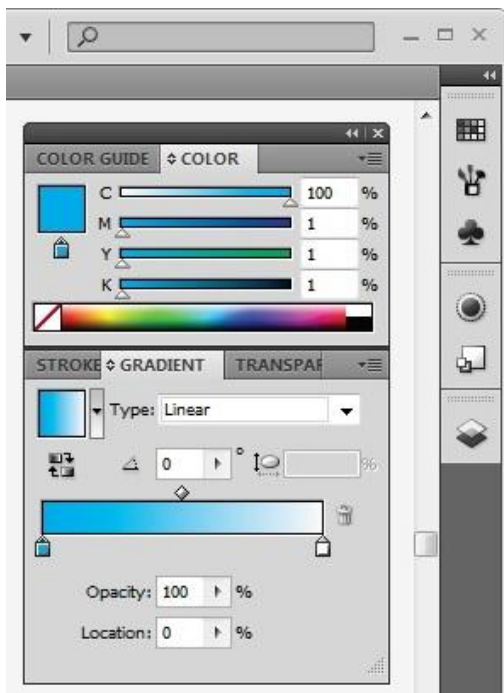
4. Color Replacement of Gradation

Example 3. How to change the color of gradation from cyan to white

1) Create an image with gradation using Adobe Illustrator.



2) Set the upper limit value.

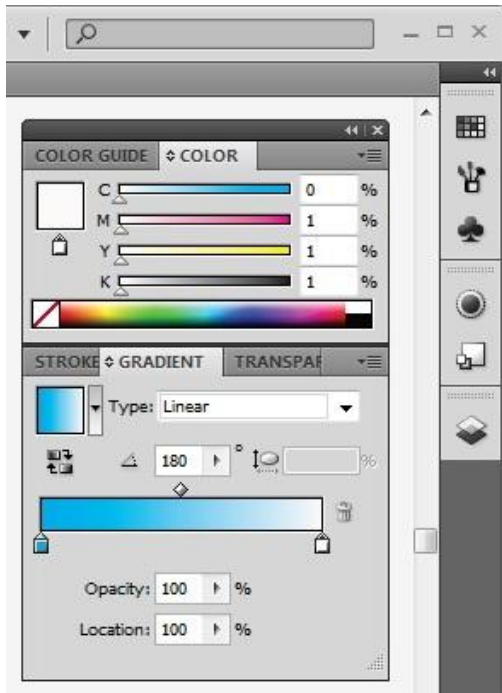


- ① Select "CMYK Color" in Document Color Mode.
- ② to ⑤ Create an image with gradation.
 - ② Click the upper limit color of [GRADIENT].
 - ③ Set Cyan to 100% and the others to 1% in [COLOR].
 - ④ Click the lower limit color of [GRADIENT].
 - ⑤ Set Cyan to 0% and the others to 1% in [COLOR].

Upper limit value

Specify 100% for the upper limit of the selected component color, and 1% for the other colors. Do not specify any values other than those above.

3) Set the lower limit value.



Lower limit value

Specify 0% for the lower limit of the selected component color, and 1% for the other colors. Do not specify any values other than those above.

Conditions for color replacement of gradation (Color Replacement Gradation)

- Replacement can be done for the files in which “Document Color Mode” is set to “CMYK Color”.
- The “Image” type is illustration only. Color replacement gradation cannot be made for photos and such. For the details, refer to the following manual.
 - ➔ RLP5SG Reference RLP5SG Reference Guide “Method of creating Color Replacement images” (Document No. D202029)

4) Save the graphic data.

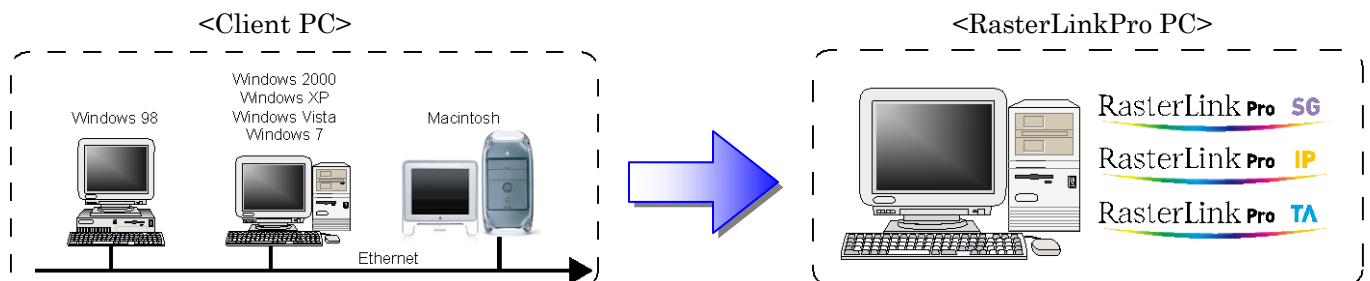
In EPS (When outputting it using a hot folder) or in AI (When outputting it using a printer driver).

Limitation of color replacement of gradation

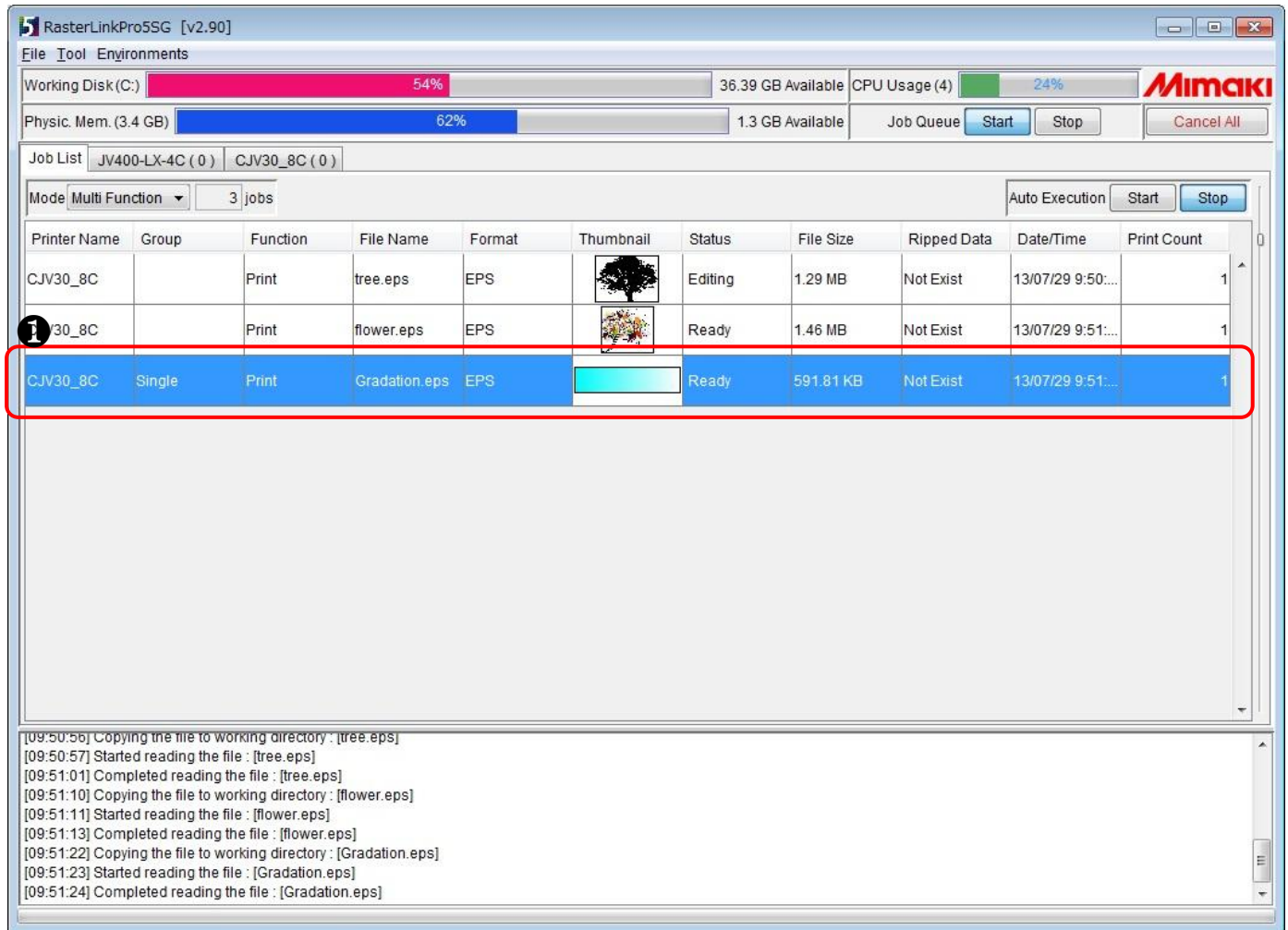
For color replacement of gradation in RasterLinkPro, set [Compatible Gradient And Gradient Mesh Printing] to OFF when you save the graphic data in Adobe Illustrator.

5) Send the data to RasterLinkPro.

As hot folder output or printer driver output.



6) Start up Job Editor.



- 1 Select the job whose color of gradation you want to replace, and right-click on it and select "Edit".
Job Editor starts up.
Job Editor can be started up by double-clicking the selected job.

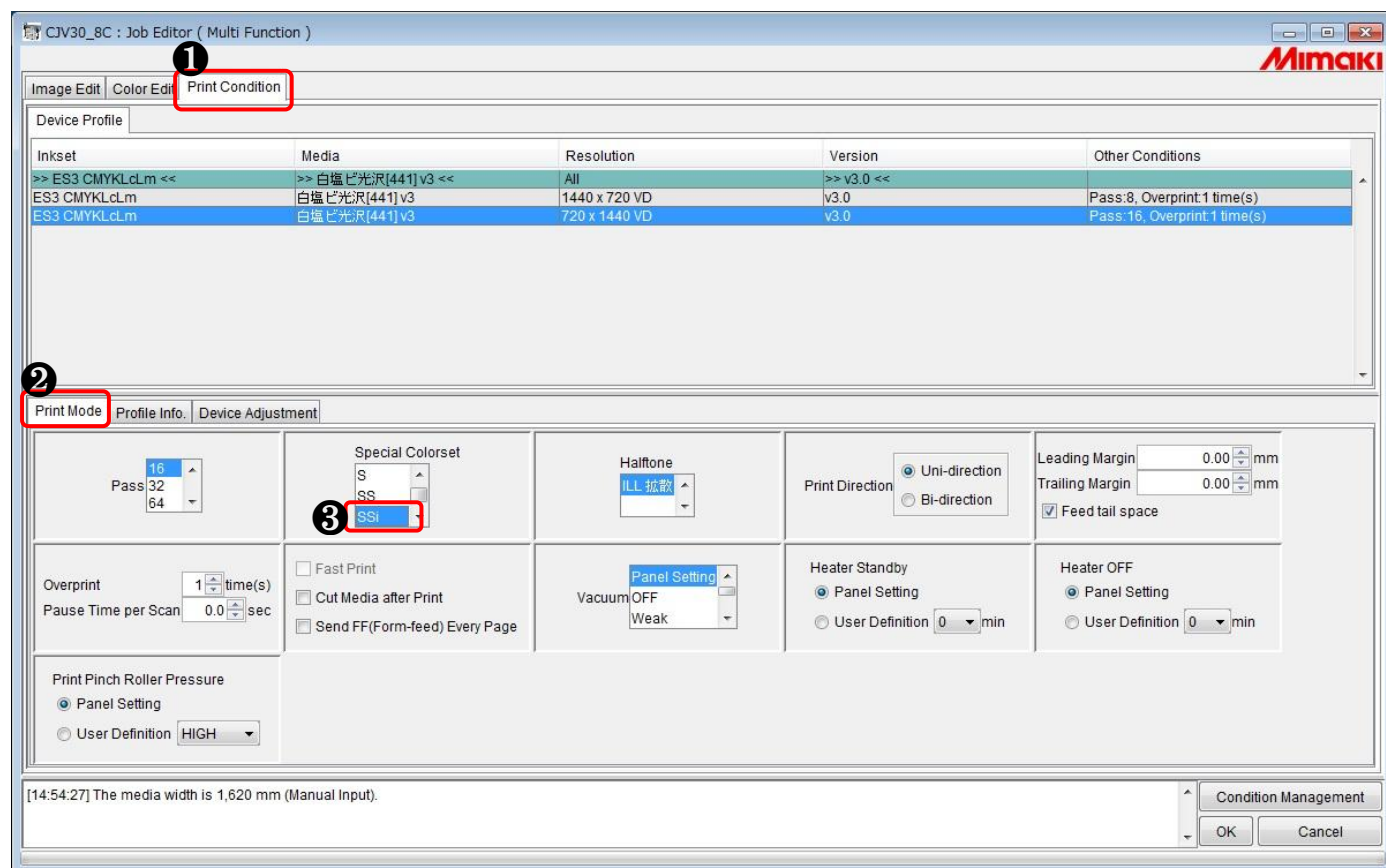
Properties...	Shift+E
Edit...	Ctrl+E
Clear Group	Ctrl+U
Immediate Print	Ctrl+1
RIP and Print	Ctrl+2
RIP Only	Ctrl+3
Print Only	Ctrl+4
Duplicate	Ctrl+D
Backup...	Ctrl+B
Delete Ripped Data	Ctrl+Backspace
Delete All Data	Ctrl+Delete
Select All	Ctrl+A
Unselect All	Ctrl+Z
Cut	

Printer name

The printer name and format may differ depending on your usage environment.

7) Change the setting so you can use white.

* Connect the printer in advance.



- ❶ Click [Print Condition].
- ❷ Click [Print Mode].
- ❸ Select an item such as [SSi] or [SS].

When changing the color to white

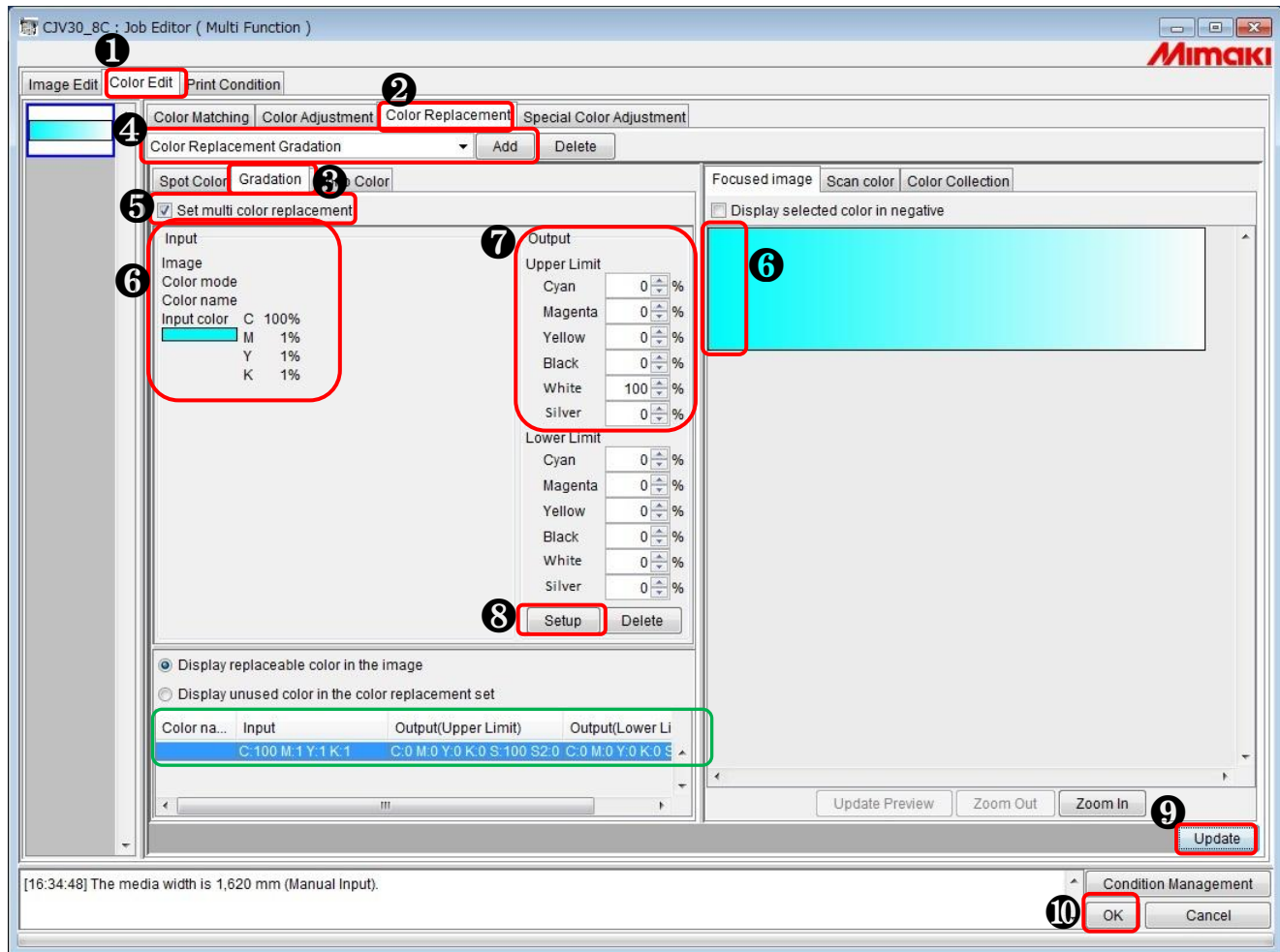
- Make sure to connect the printer before making settings.
- Select an item [w, ww, s, ss, or ssi] of "Special Colorset" in Print Condition. Otherwise, "White" and "Silver" do not appear in the output settings.
For the details on "Special Colorset", see the following manual.
➔ RLP5SG Reference Guide (Document No. D202029)

Colorset name

The name such as "ES3" or "SS21" may differ depending on your usage environment.

8) Configure the setting for Color Replacement Gradation.

* Connect the printer in advance.



- 1 Click [Color Edit].
- 2 Click [Color Replacement].
- 3 Click [Gradation].
- 4 Enter a name for this color replacement and click [Add].
- 5 Select the "Set multi color replacement" check box.
- 6 On the preview screen, click Cyan (any area of 100%) for the color to replace (Input).
- 7 For the color after replacement (Output), specify 100% for the Upper Limit of white, and specify 0% for the Lower Limit of all colors.
- 8 Click [Setup].
- 9 Click [Update].
- 10 Click [OK].

How to check specified colors of gradation

In "Input" (Upper Limit) and "Output" (Lower Limit) enclosed in green, proportions (%) of CMYK component colors are displayed.

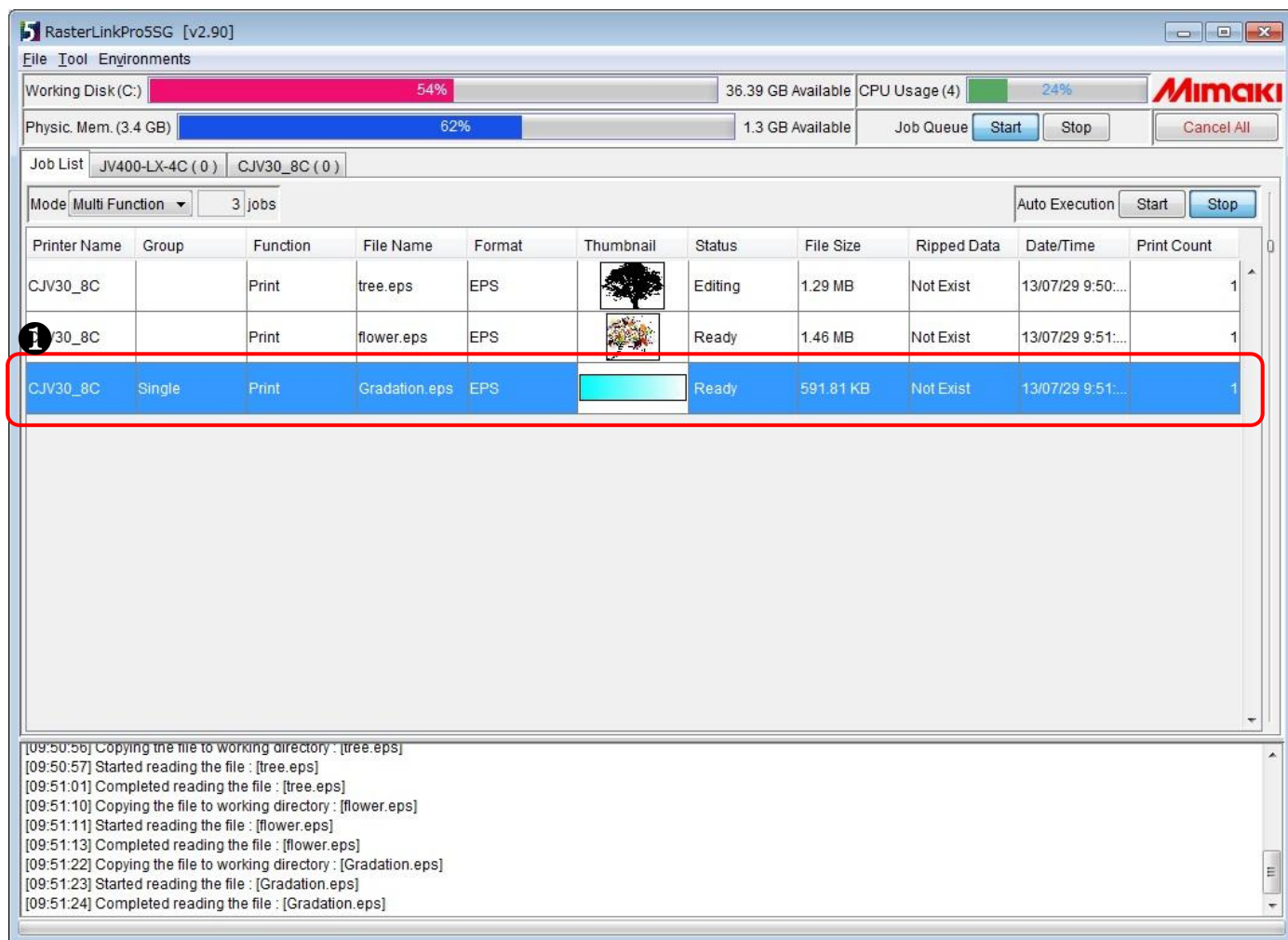
When selecting white or silver for the color after replacement

Make sure to connect the printer beforehand if you select white or silver for ink after replacement.

Conditions for Color Replacement Gradation

- Replacement can be done for the files in which "Document Color Mode" is set to "CMYK Color".
- The "Image" type in 6 is illustration only. Color Replacement Gradation cannot be made for photos and such. For the details, refer to the following manual.
 - ➔ RLP5SG Reference Guide "Method of creating Color Replacement images" (Document No. D202029)

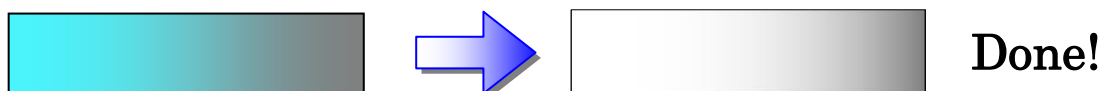
9) Print the data.



- ① Select the job to print and right-click on it, then click “RIP and Print” or the like.

Properties...	Shift+E
Edit...	Ctrl+E
Clear Group	Ctrl+U
Immediate Print	Ctrl+1
RIP and Print	Ctrl+2
RIP Only	Ctrl+3
Print Only	Ctrl+4
Duplicate	Ctrl+D
Backup...	Ctrl+B
Delete Ripped Data	Ctrl+Backspace
Delete All Data	Ctrl+Delete
Select All	Ctrl+A
Unselect All	Ctrl+Z
Cut	

- 10) The print result is as follows.



Mimaki™